

argus eyes

Volume 7, No. 18

ANN ARBOR, MICHIGAN

February, 1951

ARGUS PROJECTORS



PAT MEDDAUGH ASSEMBLING A 300 WATT PROJECTOR.



WINNIE FRASER AND GERTRUDE HAINES ARE INSPECTING A PBB 200. IN THE BACKGROUND, YOU SEE DOLORES BISARD PACKING THE PROJECTORS.

Projectors produced at Argus cover almost all the field where projectors might be used. There are four major types made here. There is the one hundred watt, used in homes for occasional use, the 150 watt is another home type that produces a more brilliant picture. For larger rooms and the utmost in home projection, there is the 200 watt, either with or without a blower case. For use for long periods of time the blower case is essential to keep the projector cool. For professional use in schools, hospitals, etc., there is the 300 watt for full brilliance.

The optical system in a projector presents some problems not encountered in cameras. In a camera, for instance, the light from the sun or flash bulb is con-

densed through the lens and onto the film at the back of the camera. In a projector, the process is reversed. The light from the projector bulb is condensed through the lens of the projector, passes through the film transparency, and projects the picture on a screen. As light causes heat there must be a means of keeping the projector as cool as possible so as not to melt the transparency. This means of keeping cool is accomplished in several ways. In the lower wattage projectors, safe cooling is achieved by special cool design of the case and means of holding the lens so that air circulates freely between them. All Argus projectors are equipped with a special heat absorbing lens, which assists in keeping heat away from the slides. With higher watt-

ages, a blower case is available for maximum cooling.

Just recently installed at Argus is a method of determining the evenness of light produced by an Argus projector. This inspection machine consists of several "electric eyes" or photoelectric cells mounted on a screen. When a light from a projector is cast on the screen, the photoelectric cells are activated and respond in proportion to the amount of light that they receive. Impulses received by the electric eyes are converted to electrical energy and are recorded on a panel at the front of the instrument in the form of milliamperes. All Argus projectors must cast a field of light that is even all over.

ARGUS EYES

Argus Eyes is published for the employees of Argus, Incorporated and their families.

It is intended to be a means of friendly communication between them, and to provide a reliable source of information concerning the company's business.

Beverly Bullis of the Personnel department makes sure that news is gathered and that pictures are obtained and arranged in readable fashion for publication about the 10th of each month.

Charles A. Barker, "Jimmy" to all, is Art Director and Art Consultant. The profiles are done by Harry Rookes.

Sam Schneider of the Photographic Department furnishes pictures.

Reporters for this month's Argus Eyes were: Ethel Huffman, James Meldrum, Delton Maple, Geraldine Space, Eddie Girvan, Alice Weir, Harold Bailey, Norm Symons, Olin Robinson, Bill Fike, and Roy Craik.

PROFIT SHARING FUND QUESTIONS

Any employees having questions regarding the Profit Sharing Fund, may drop them in the question box located in the Personnel Office.

The Members of the Managing Committee will collect the questions and will promptly publish the answers in Argus Eyes. It is not necessary to sign your name to the questions unless you desire a personal answer.

Your questions will help your Managing Committee.

RECREATION CLUB

Everyone has been so busy that the Recreation Club has had to take second place, but some thought is being given to a Spring Dance. We will let you know, via the bulletin board, when we get some arrangements made.

For the benefit of those who wonder who the Fishing Contest winners were, here are the results. Alfred Kesler must be quite a fisherman as he won 1st and 2nd in the Pike class, 1st in the Bass, 1st and 2nd in the Perch, and 2nd in the Bluegill. Gene Rhode took 1st in the Bluegill, and Harold Henry 2nd in the Bass.

In addition to having all those fish to clean, Alfred cleaned up a total of \$45.

If any employee has a suggestion that would help the Club plan future activities, he should contact his representative or the club secretary, Thelma Burke, extension 328. It is your club, so let's have some ideas.

The Club will sponsor the Bowling Banquets again this year.

--Eddie Girvan

WHAT IS MTM? by Bill Thompson

Timestudy observers, engineers, foremen and other people at Argus have just completed a course in Methods-Time-Measurement, (MTM), a system of work measurement and methods analysis. At this time, the groups are developing skill in applying the fine degree of analysis required to use it. Some of the Argus people have had occasion to have their motions recorded during practice application. Let's take a good look at how MTM works and what we hope to accomplish with it.

MTM is a motion by motion analysis of the method of doing a job. Each motion is classified and recorded by means of a system of "shorthand" symbols. The act of reaching to a screwdriver laying 12" away on a bench, for example, may be recorded as an R12B which, in general terms, means a reach of twelve inches to an object whose location varies slightly from cycle to cycle. The finished analysis lists in detail the precise working method. Anyone, then, is able to sit down with the observer, and carefully go over the motions required to perform the job. In this way, the operator can assure himself that every act required to do the job is listed on the analysis form. Future set-ups of this same job can be made to conform to the method.

Time has been established for each motion. The total of all motion time gives the time to perform the operation while working at the "normal" pace. It is a pace that can easily be exceeded by the average worker. By applying the standards in this fashion, it is never necessary for the observer to judge the speed of a workman being observed.

The motion time standards are printed on a single 8" x 9" card. They are the same time values used in over two hundred factories from coast to coast. Copies of the cards are carried by foremen and supervisors for your inspection.

We hope to accomplish several things by using MTM. First, and foremost, it will eliminate the old argument about how fast or slow a person is working while being timed. Operator, foreman and observer enter, instead, into an informal discussion of the job, itself. Secondly, every member of the Argus team will have equal standard tasks. All job standards are to be set by the same motion time values which means equal pay for equal work.

A job set by MTM is method and time recorded together. It forms a sound basis

REVIEWING ARGUS PROGRESS

by R. E. Lewis

We are contemplating an expansion of our optical facilities as a direct result of a contract for the manufacture of military equipment. We have now applied to the Defense Production Authority for a Certificate of Necessity in connection with the proposed construction. If this request is approved, we expect to begin construction sometime this spring on properties adjacent to Plant II.

It has come to my attention that some of you have been unhappy with the handling of suggestions you have submitted. It is necessary to take sufficient time to consider fully each suggestion, but I agree that some have taken too long. We have been particularly busy recently preparing quotations on Government contracts, and working on the development of new items, particularly for the Armed Forces, so that there have been unfortunate delays along the line. It is my feeling that the Suggestion Plan is a very important part of our program, and we will take the necessary steps to see that the suggestions are processed more rapidly in the future.

You have recently received a copy of our Semi-Annual Report, accompanied by a letter explaining its significance to you. Inasmuch as our current operations were reviewed in those messages, there is little else I can add at this time.

DO YOU NEED HELP WITH YOUR INCOME TAX?

Anyone desiring help in preparing their income tax return should come to the Personnel Department. Mrs. Radford will be glad to give you the necessary assistance.

for evaluating future methods changes. It is an Argus policy to encourage method improvements and to compensate the employee through our Suggestion Plan. The value of your suggestion can be determined by MTM, and the suggestor paid accordingly. The Argus team must continue to improve methods to meet competition and improve the product. This activity is what keeps your job secure.

With new products, we hope to use MTM to develop sound methods more quickly than ever before. This means a greater contribution to our defense effort.

Your foreman will appreciate your questions in this procedure.

TOOL RUMORS

With six new boys, the tool room is growing into quite a large department. George Belanger, Henry Millage, and Claude Stoner are former Argus employees, while Jim Smalley, George Berkimer, and Merle Myers are entirely new at Argus.

Several of the tool room boys are among the new members of the Elks.

If you're not busy during your noon hour, we have a treat for you. We're going to have boxing bouts everyday over here to sharpen up the boys.

ACCOUNTING

Our congratulations go to Roy Craik, the proud papa of a bouncing baby girl. Little Nancy Alice was born February 2.

No one seems to know who left the unsigned valentine on Will VanDyke's desk. Maybe you have a secret admirer, Will!

Then the "Eli Lilly Pharmaceutical Co." entertained senior medical students and their wives at Indianapolis January 28, 29, and 30, Millie Jones was one of those present. Millie tells me everything was done in high style. Corsages were even sent to all the wives before dinner one evening.

New faces around the Accounting Department this month include Jack Grimston, Ken Leighton and Bill Brookmeyer. A big welcome from all of us. We hope you enjoy your work here at Argus.

Mary Kay Long is very busy these days making those all-important wedding plans. The big day is April 7. Also, in the same dither is Gerry Nash.

ENGINEERING

The Engineering Department gets busier everyday. Those new faces in the Drafting Room we would like to welcome to Argus are Vern Davis and George Harden. Bruce Pester has transferred to Engineering from the machine shop, and Arvid Andreson has returned to Argus after several years. Also, new in the Engineering Department are Amy Jacobs and Mel Hayes.

Birth notices were also in the news. Jim Lodwick was passing out cigars celebrating the arrival of a new baby boy. Congratulations, Jim, I'll bet you he has a brush haircut all ready.

Also, new items in the news are - a garden tractor for Will Parker, and a new Chevrolet for Jim Meldrum.

Several people at Argus will remember Ed Palmer. He was cartoonist for Argus Eyes. Ed visited Argus a short time ago and reported that he was married January 28, and was moving to San Diego, California, where he had a new job.

Remember that each one of us gets a ration of one body with one set of organs to last for life. Like other machines, this one set slowly wears out. No need to worry about it. Expect it. But to enjoy life to the full, know enough about the simple mechanical needs of your body and mind to treat them fairly. Then you'll get a lot more happy mileage out of this wonderful machine that holds your life.

**ARGUS BOYS
IN SERVICE**



Pfc. Clifford Swanson

Cliff, better known as "Kip" by his friends at Argus, is stationed at Camp Cooke, California. He is in the 40th Infantry Division, and according to Kip, he is in one of the finest groups the Army has.

Since his induction, in October, 1950, he has been going to school on the base. Evidently he is doing well for he is now instructing some of the new recruits.

Although we may be quite disgusted with our Michigan winters, Kip misses them, and wishes he could see some of our snow. He also misses his friends here at Argus, so take a minute some time and drop him a note. The address is:

Pfc. Clifford Swanson 55051938
Bty B., 980th F.A. Bn.
40th Infantry Division
Camp Cooke, California

BONDS FOR THRIFT



Receiving a bond from Payroll Savings Plan is nothing new to Ed Sleezer. Ed has been an active payroll bond subscriber for nine continuous years, a record no one else at Argus can top.



Don Hindal and Betty Wrathell are two of our newest members in the Payroll Savings Bond Club. Sixty employees have joined the Bond Club during the last month. Are you one of them?

RED CROSS DRIVE

The Red Cross Drive will open at Argus Monday, March 5. Your contributions will be matched dollar for dollar by your Company.

This Is Your Chance To Win A Prize Too.

There will be two 75 cameras complete offered as prizes. If you give \$3 or more you will have a chance to win an Argoflex 75 camera.

When the cards are distributed Monday morning, give generously for those who need your help and win yourself a worthwhile prize in the bargain.

Supported by the people and schooled by years of experience in war, in peace, in times of disaster, the Red Cross now has been assigned unprecedented tasks in the interest of national security and world peace.

You can help mobilize the forces of mercy for the protection and defense of your family, your community, and the nation through generous support of the 1951 Red Cross fund campaign.

Today's Red Cross Job Includes These Major Defence Tasks:

Serving members of greatly expanded armed forces and their families.

Procuring vast quantities of blood and stockpiling blood plasma for instant use.

Training 20,000,000 first aiders... teaching home nursing skills to hundreds of thousands...instructing 100,000 additional nurse's aides.

Expanding Red Cross disaster facilities across the nation to assist in civil defense.

Recruiting millions of additional volunteer workers.

Red Cross Service Highlights (1949-50 Fiscal Year)

For the Armed Forces

Red Cross workers with armed forces at home and abroad handled 210,100 cases and service requests each month; chapter Home Service workers, 66,400; Red Cross recreation programs operated in 111 military hospitals. The program cost \$17,154,800

For Veterans and Dependents

Chapter Home Service workers handled 138,300 cases and service requests each month; field workers at Veterans Administration offices, 62,000 claims cases; Red Cross volunteers gave nearly 2,000,000 hours of service to veteran patients. Total program cost was . . \$14,015,300

FOURTH FLOOR NOTES

Helen Kennedy and John Kampas had birthdays the early part of February so we combined the two parties and had one great big celebration. We all enjoyed the wonderful cake, and we are sure Helen and John were happy with their gifts.

Your reporter, Marion Hirsch, received a nice letter from Cliff Swanson. Cliff, who worked in our department, left for the Army recently. He is stationed in California, the address is beneath his picture under "Argus Boys In Service." Cliff would appreciate hearing from all his friends.

The song, "It's A Cold, Cold Winter," really means something to Millie Weiss. She will tell you that frostbitten toes are mighty uncomfortable.

Sandra is now happily sporting a lovely diamond. Sandra recently announced her engagement to Pat Navarre.

In Disasters

Red Cross relief and rehabilitation given to 223,400 persons in 390 domestic disaster operations.

Program cost \$6,081,500

To Provide Blood

More than 567,000 pints of whole blood collected through 34 regional centers and 46 mobile units; 500,270 units of blood derivatives distributed throughout nation. Program expenditure (including capital outlay) \$7,153,200

To Promote Health

Red Cross chapters issued 400,000 certificates in first aid; 37,700 in accident prevention; 609,000 in swimming; 120,000 in life-saving; and 180,000 in home nursing. The program cost \$5,690,000

For Children

Junior Red Cross members in schools packed and shipped overseas 527,000 gift boxes; the National Children's Fund sent educational and health supplies. Total value \$1,273,300

By Trained Volunteers

A monthly average of 82,900 volunteers gave more than 11,000,000 hours of service; made 636,400 garments and 18,102,100 surgical dressings; drove 8,882,100 miles; served over 2,720,900 meals and snacks.

Argus Profiles

by H. J. R.



Braun, George

Automatic screw machine operator and setup man in the machine shop for the past five years. Has had over twenty years experience as an automobile mechanic and at one time was proprietor of the Manchester Automobile Company. Was born in 1895 in Scio township, lives now on 907 E. Huron and has two sons, one of whom is a Lieutenant Commander and Instructor at the Naval Academy at Annapolis.

OPTICAL ILLUSIONS

We certainly have envied Bud Wheeler. While we were struggling with our cars which were stuck in deep snow banks, slipping all over the sidewalks, and trying hard to keep warm, our friend Bud was enjoying the Florida sunshine. He says he was only there two days, which we cannot understand. What happened to the rest of the time?????

If you are wondering why we are wearing sunglasses in Optical - don't worry, it isn't because of our eyes. We simply want to dim the effects of the light that comes over a certain young lady when Bob Evans comes into our department.

We're happy to have Katherine back to normal, after that nasty spill.

Helen Snyder and Edna Bourdelais hear regularly from their sons who are in service. Rolly Snyder is stationed at Fort Riley, Kansas, while Louie Bourdelais is over in Korea.



MEN'S BOWLING LEAGUE

We are starting the last lap of the 1950-51 season, with the Argus Camera team 16 games ahead of the second place team. We wish them well, but we also hope that some of the gap is closed. After all, the rest of the teams would like a little cut of the prize money. Probably a warning to the Argus Camera team should read, "Watch out boys, for we are all gunning for you."

There can only be one winner, but we all can look forward to a good feed and a good time after the season closes.

Team standings:

Argus Camera	71	21
Pressmen	57	35
Paint Shop	54	38
Skunks	48	44
Screws	44	48
Projectors	43	49
Warehouse	43	49
Maintenance	42	50
Lensgrinders	42	50
Conf. Xperts	42	50
Tool Room	34	58
Ten Pins	34	58

LADIES' BOWLING LEAGUE

Ten Pins	65	35
Card and Camera	62	38
Schmidt's Beer	61	39
Erle's Hi-speed	59	41
Blue Front	56	44
Spitfires	56	44
Purchase Radio	53	47
Brown Keg	49	51
Graves Barber Shop	43	57
Paint Shop	40	60
Happy Gang	31	69
Atom Busters	26	74

REMBRANDTS

Although we have had plenty of cold weather right here in southern Michigan, Si had to go north to fish through the ice. It's too bad the fish were frozen to the bottom of the lake because Si wanted to bring at least one home.

Herbert, let's be a little more careful while driving that new car. you only have three more fenders to go. What did the other fellow say, Herb?

Walter and Ida Hubbard just purchased their first new car. Let's hope that they are more careful than Herb.

SERVICE SCOOPS

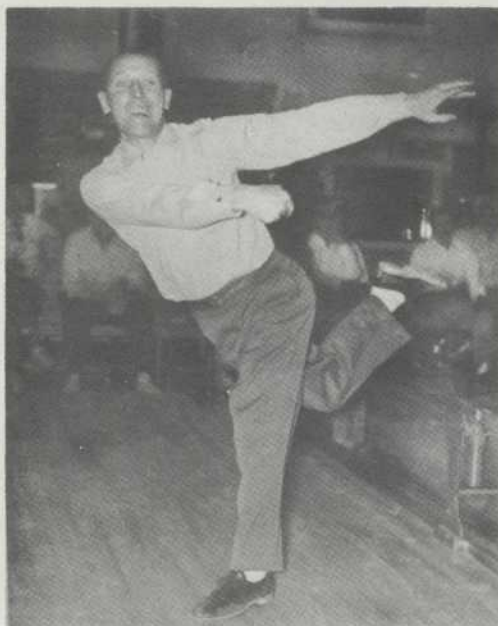
Well, another month has rolled around and once more we stop to take stock of what has happened that hasn't been reported in this space previously. At first glance, things seem to be much the same - so gradual are the changes that occur from day to day. But upon closer scrutiny, we realize that two new faces have joined the ranks, replacing the vacancies created by Ruth Beckman, when she transferred to the Sales Department, and Ed Drutchas, who has taken a job with General Motors in a plant near his home.

The new feminine loveliness in the office is Mildred Nelson. She and her husband, Charles (a senior dental student at the University of Michigan), are from Iron Mountain. The other new face belongs to "Chuck" Murphy who is helping out with the correspondence. Welcome into the fold, Mildred and Chuck. We will gladly share our temperamental drinking fountain with you.

Let's see, what else has happened that may be newsworthy? In March, Pauline Murphy (no relation to Chuck) will celebrate her fifth year with Argus. We hope you will stay with us for five times five years more, Pauline.

Speaking of anniversaries, Tom Kentes' boy, Chris, has celebrated his fourth birthday. Oh yes, I mustn't forget to mention that Dorothy Lixey is sporting a new car. It is new to Dorothy, at least, (a '49 Ford).

BOWLING OR BALLET?



Norm Egeler



Joe Detweiler



Paul Haines

Anniversaries



EVELYN LOY
Switchboard Operator
5 years



BARBARA SPRADLIN
Line Operator
5 years



BOB BARSANTEE, Sr.
Engineering
5 years

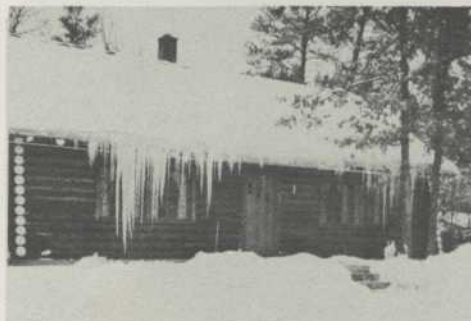


FLORENCE SCHWEMMIN
Final Inspector
5 years

HARRY'S PRIDE AND JOY WELCOME TO BLACK BEAR INN



Harry Kaufman's grandson, Irving, is growing by leaps and bounds. He is one year old now, and almost as big as his grandpa.



Black Bear Inn is owned and operated by Susie and Larry Jones, former employees of Argus. Their Inn is located on M-18, between Roscommon and Grayling. If any of you are near there at any time, be sure to stop in to say "hello."

NANCY



This sweet baby is Nancy Joyce Loy, three month old daughter of Tom Loy, machine shop. Her grandpa, Wayne Loy, also works in the machine shop.

ARGUS, INCORPORATED
PROFIT SHARING RETIREMENT FUND
BALANCE SHEET

JANUARY 31, 1951

ASSETS	<u>LEDGER VALUE</u>	<u>APPRAISED VALUE</u>
Cash	\$ 2,481.67	2,481.67
Note Receivable - Member	350.00	350.00
Accrued Interest & Dividends	8,740.89	8,740.89
Investments		
U. S. Savings Bonds - Series G. 2-1/2%	\$ 461,000.00	461,000.00
U. S. Treas. Bonds - 2-1/2% - 72/67	101,452.24	100,687.50
Argus, Inc. 5% Cum. Pfd.	<u>200,000.00</u>	<u>200,000.00</u>
	762,452.24	761,687.50
Totals	\$ <u>774,024.80</u>	<u>773,260.06</u>

LIABILITIES

Members Contributions Unallocated	\$ 31,074.29	31,074.29
-----------------------------------	--------------	-----------

MEMBERS EQUITY

Contributions by Argus, Inc.	\$ 319,221.15	\$ 319,221.15
Contributions by Members & Wage Awards	237,178.15	237,178.15
Accumulated Income & Equity relinquished by members 8/1/50	175,268.42	175,268.42
Total		
Net Earnings Aug. 1, 1950 - Jan. 31, 1951	<u>11,282.79</u>	--
Valuation Adjustment		10,518.05*
	742,950.51	742,185.77
Totals	\$ <u>774,024.80</u>	<u>773,260.06</u>

*Net Earnings Aug. 1, 1950 thru Jan. 31, 1951	\$ 11,282.79
Deduct: Adjustment U. S. Treas. 2-1/2% Bonds 72/67 to market 100 22/32	<u>764.74</u>

The appraised value of Members Equity as of Jan. 31, 1951
was 101.43754% of the ledger value. \$ 10,518.05

Valuation Approved
Managing Committee

by L. F. Schwanbeck
Secty.

Certified Correct
Ann Arbor Trust Company, Trustee

by L. A. Tappe
Vice Pres.