

ANN ARBOR *play-*
wrights

AND

ACT

PRESENT

UNITED ARTISTS
NEW VOICES

Bijou

NEW VOICES
Bijou

A FESTIVAL OF
10 PLAYS BY
LOCAL
PLAYWRITERS

Ann Arbor
Civic Theatre
May 11 -
20, 1995

FINE PHOTOGRAPHY



320 SOUTH MAIN STREET (313) 668-7701

MINSKY
THE TAILOR



We alter anything!

Arborland: Outside the mall 973-6979

Westgate: Behind Mountain Jack's 769-4994

Open seven days, weeknights until 9 p.m.

LAZARUS CONVENING

by T.D. Bateman

directed by Rita Gerardi and Rob Sulewski

CAST

ALBERT	Brian Falkner
THEO	Andrew Smereck
NURSE	Erica Dutton

SETTING

A nursing home



INCIDENT AT THE GRENZHOTEL

by Brad Field

directed by Ric Hunt

CAST

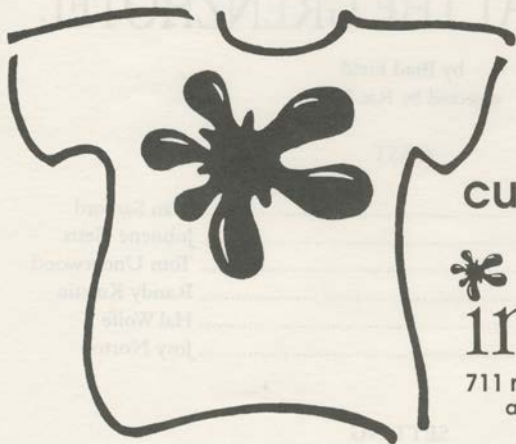
DEE~DEE	Sean Sanford
MANAGER	Johnene Getts
COP	Tom Underwood
TOUR GUIDE	Randy Kurstin
TOURIST	Hal Wolfe
STUDENT	Josy Norton

SETTING

A hotel in the mountains overlooking an international border

THANKS TO ...

The Bijou Play Selection Committee: Susan Morris, Mary Ann Nemeth, Ann Kolaczowski Magee, Mervil Miller, Brian Falkner, John Dodt, Carol Shepherd; Kim Kauffman and our friends at Tappan Middle School, where the plays were rehearsed; Fred and Dee Talbot, who took great portraits of our group; Harry Pollack of Laurel West Home Health Care; University of Michigan Hospitals Parkinson's Support Group; Susan Morris again; Joanne Charder at RA Cooch and Co., for fielding phone calls; Wendy Wright; Jeff Zupan; Don and Edie Pelz; Lisa S. Powers and *CURRENT* magazine; the Plymouth Theatre Guild; the Goodtime Players; Walter Shepherd for vintage slide projection equipment; Sir Speedy Printing of Plymouth for — speed; and a very special thanks to Kenn Pierson and Michael Geiger of Serpent's Tooth Theatre Company — who gave AAP its original inspiration!



custom t-shirts

 **ink inc.**

711 n. university • ann arbor
above moe's sport shops

665•3200

BIJOU WHO'S WHO

NAOMI ADIV (Kelly) has acted since she was nine years old in Ann Arbor Young People's Theatre and Ann Arbor Young Actor's Guild. This is her first production with the AACT and she is very excited to be doing it! Naomi is 15 years old and is currently in the 10th grade at Ann Arbor Pioneer High School.



JAMES BARNES (Set Construction) started in tech theater in 1981 by signing his name to a set crew list for a U of M Gilbert and Sullivan production of *Yeomen of the Guard*. He has been a mainstay for the Civic for several seasons and most recently lent his talents to *Annie*. He loves tech work . . . and golf!

T.D. BATEMAN (Playwright, *Lazarus Convening*) is a Detroit-area native who has been writing poetry, plays and fiction since receiving his bachelor's degree in English Lit from WSU. His poetry and prose have been read publicly in the SE Michigan area, at Detroit's Poetry Resource Center of Michigan and Horizons in Poetry. Mr. Bateman is currently writing a novel. He is a member of AAP.



JON BENNETT (Burton, Joe) comes back to Ann Arbor after 15 years of traveling the States to be with his family and pursue his acting. Ten of those years were spent in California, where he first discovered his desire for the stage. His more memorable performances were playing Ferdinand in *The Tempest*, Willy Loman in *Death of a Salesman*, Murray in *A Thousand Clowns*, Lee in *True West*, Mills Practice in *Little Murders*, and the roles of Uncle Rand and the Fireman in Sun Valley Repertory Company's rendition of *A Child's Christmas in Wales*, also starring Richard Dreyfuss.



CHERYL BERTEEL (Costumer) has worked on many shows for AACT including *South Pacific*, *The Miracle Worker*, *Gypsy* and *Dolls* and more. She also has painted sets and worked running crews. An employee at Sears, Cheryl has also worked for Grosse Pointe Theatre.

PAUL M. BIANCHI (Aaron) recently moved to Ann Arbor from Chesterfield, MI. He is employed with the Medstat Group as a Data Manager. He has previously worked with Algonac Community Theatre, Richmond Community Theatre, Macomb County Community College Dinner Theatre and Oakland University, in such roles as Rabbi in *Fiddler on the Roof*, Hubert in *The Student Prince*, Paco in *The Man of La Mancha*, and Philip in *Exit the Body*. When he is not working or acting he enjoys music, golf, reading and dancing.



DANA BUCK (Stage Manager) has worked with AACT for more than 15 years, as a director, designer, stage manager and actor. He has appeared on AACT's stage in *Bullshot Crummond*, *Arsenic and Old Lace*, and as Richard in *The Lion in Winter*. Directing credits include *Jacques Brel is Alive and Well* and *A Day in the Death of Joe Egg*. He will be directing Karel Capek's *RUR* for AACT next spring. Dana is employed at U of M's Kelsey Museum as an exhibit designer.

ORIN BUCK (Graphic Artist) works in video, graphic design, abstract computer video art, painting and drawing. He writes and is the Arts Editor for *Agenda*, an Ann Arbor free-distribution monthly newspaper, and produces graphic design work for customers such as *Current* magazine and *Performance Network*. Orin is also the annual co-organizer of the decorations for the Ann Arbor Film Festival. He is an Ann Arbor native.



SUZANNE BURR (Playwright, *Post Partum*) is an Ann Arbor-based playwright and screenwriter who is developing *Post Partum* as a two-act play. Her full-length drama, *Hang the Moon*, is currently being presented at the Purple Rose Theatre in Chelsea. Suzanne has received a Creative Artist Grant from the Arts Foundation of Michigan, and a Hopwood Award from U of M, where she teaches screenwriting. *Tuesday's Child*, her one-act of six monologues by women, was produced in last year's Ann Arbor Festival of Original Plays. She is a member of AAP and the Dramatists Guild.

PAMELA CARDELL (Tracy, Binky) has performed recently at EMU Theatre as Kathy in *Company*. You may also have seen her as Katya in *Two Sisters* at the Purple Rose Theatre, or as Laurel in *Torch Song Trilogy* at the Performance Network. A graduate student in theater, she hopes to complete her master's degree in December. She would like to thank you for supporting local theater, and to her friends and family — MOQBY lives!



ADAM CAREY (Director, *Post Partum*) is a Dearborn native and graduate of Wayne State University's Bonstelle program in theater. He has appeared in numerous productions across Michigan, most recently as the Men in *Personal Jesus* by Carol Shepherd at the Performance Network, and as Sky Masterson in *Gypsy* and *Dolls* for the Plymouth Theatre Guild. Adam directed and co-produced the February 1995 production of *The King and I* for the Plymouth Theatre Guild.



ANDREA CHAMBERS (Playwright, *Scaphoxes*), director of AACT's February production of *The Miracle Worker*, has also directed at several Chicago theaters: At Northlight, she coordinated the Fresh Ink staged reading series, for which she directed Anne McGravie's *Dolls*. Other directing credits include *Survivors* by LA Ross at Chicago's Café Voltaire and Mia McCullough's *Everyone's Afraid of the Dark* at The Playwrights' Center and at the 1993 Bailiwick Directors Festival, where it was awarded "Best New Work" and "Best of the Fest."



MARIA A. COLLIS (Playwright, *Living Together: Just Say No*) started writing a novel at the age of nine and quit after three pages. Years later, with the support of Ann Arbor Playwrights, she completed *Strange Bedfellows*, her first full-length stage comedy. Maria has received two writing prizes at Yale and an MFA in writing from Columbia; and has served as script consultant on a feature film. Two of her plays, *Relationships: Why Bother?* and *Fish For Lunch*, were produced in the Simply New Short Theatre



Festival in Syracuse, NY. From her current location in LA, Maria is working with the SE Michigan-based Writers of the Michigan Backwater (WOMB) on a project for radio as well as writing a screenplay. She is a member of AAP and the Dramatists Guild.

CLAIRE CONWAY (Client, Della, Crystal) moved to Ann Arbor last June after marrying her husband Dan and has been looking for a good part in area theater ever since. She was pleased to be offered not one, but two parts in this production. Her favorite roles in the last 15 years include Liat and Scratch in *South Pacific*, Sheila in *A Chorus Line*, MaLynn in *Steel Magnolias*, McMillin in *Nuts*, and Amy in *Company*.



TOM COOGAN (Properties) This is Tom's second time with AACT. He has recently returned from the wilds of Northern Indiana. In his prior service with AACT, Tom was involved with props and set construction in a variety of shows, including the recent production of *The Diary of Anne Frank*.

JOE DIEDERICH (The Man) is a veteran of area local community theater, and AACT. Joe was last seen as Emile in Civic's production of *South Pacific*. He has also acted professionally in several Purple Rose Theatre Company productions. Joe is happy to be making his Civic PlayHouse debut.



MADELINE STRONG DIEHL's (Playwright, *Epiphany at McDonald's*) plays and staged readings have been performed at Indiana University, Ohio State University, and the Bloomington (IN) Playwrights Project. She worked full-time as a free-lance reporter for five years in Europe and Ann Arbor before moving to Chicago last summer. A founding member of AAP, Madeline is a full-time mother of two and a "middle-of-the-night" writer of essays and plays.

JOHN DODT (Director, *Epiphany at McDonald's*, Coordinating Artistic Producer, Publicity, Photography) writes fiction and drama. His most recent work, *Four Rooms in a House*, was workshopped as part of the New Script



Development Series at AAP in 1994. John's recent theatrical credits include serving as associate producer and assistant director for the 1994 it's notTV production of *Personal Jesus* at the Performance Network. He earned his BA in English from Wayne State University and appears in print as both a journalist and photographer. He is a member of AAP and the Detroit Filmmakers Coalition.

ERICA DUTTON (Nurse) has performed in several productions in the Ann Arbor / Detroit area, including *Les Belles Soeurs*, *Gin*, *A Day in the Death of Joe Egg*, and *Quartet*. When not performing, she runs two businesses: counseling and organizational development. She is very pleased to be doing her show by a local playwright.

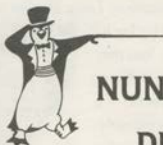


BRIAN FALKNER (Client, Jamie, Albert, Coordinating Artistic Producer, Set Designer, Set Construction, AACT Liaison) is an actor with the Performance Network's Goodtime Players repertory troupe, a director, an AACT member, and a playwright member of AAP. Brian's play *Personals* was workshopped with AAP in 1994, and he is currently finishing a new play which looks at life with the AIDS crisis, to be presented as part of the Performance Network New Works series in the fall of 1995. Brian received acknowledgement from Christopher Potter in the *Ann Arbor News*' year-in-theater review for his work in the revival of Jay Stielstra's *Tittabawassee Jane* at the Performance Network last fall. AACT audiences saw Brian last year in *Albee's Seascape* and in *Spoon River Anthology*.



BRAD FIELD's (Playwright, *Incident at the Grenzhotel*) earliest playwrighting experience was *Lust, Lucre and Liquor: or, Virtue Unbesmirched*, a "mock-melodrama" which played on the Ohio river showboat *Majestic* in the early '50s, on which Field also appeared as the First Low Comedian. An English professor at WSU in Detroit until 1992, Brad was last year's winner of the Western Great Lakes Playwriting Competition. Full-length plays have been produced at Detroit's Attic Theatre, the Cleveland Playhouse, and Madison Rep in Wisconsin. Brad also writes novels, and short stories "that appear from time to time in little journals with two, not three, staples to hold them together." He is a member of Michigan Playwrights and the Dramatists Guild.

Plymouth Theatre Guild is pleased to present its 1995-96 Season



NUNSENSE

DEATH OF A SALESMAN

GREASE

THE OWL AND THE PUSSYCAT

*For information about auditions
or show dates please call
810-349-7110.*

**PLYMOUTH THEATRE GUILD
performs at the
WATERTOWER THEATRE**



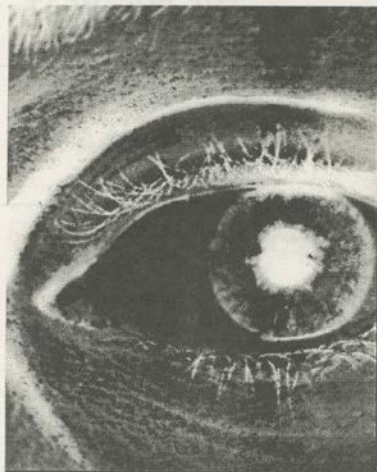
JIM FLOYD (Playwright, *The Perfect Crime*) hopes that current script ideas transfer to paper with as much ease and alacrity as *The Perfect Crime*. An EMU theater graduate, Jim has directed *The Female Odd Couple* and *Reflections* at the Frank Ross Laboratory Theatre. Jim's acting experience includes roles in *Into the Woods*, *Charley's Aunt*, *Greater Tina*, *Lone Star*, and *A Funny Thing Happened on the Way to the Forum*.

LIZ FOSTER (Dr. Mavis Misandras) *Living Together: Just Say No* is the second original play Liz has appeared in at AACT this year. You may remember her as Sophie in Cassie Mann's *Waxing the Moon*. Unless, of course, you didn't see it, in which case you probably don't. At AACT, she has also appeared in *The Clouds and Skin of Our Teeth*. Next year, she'll take a stab at directing *Rosencrantz and Guildenstern Are Dead* in this lovely theater. Liz would not like to dedicate this performance to Steve.



Co-Producer for the 1994 Ann Arbor Festival of Original Plays at U-M's Trueblood Theatre, **RITA GERARDI** (Director, *Lazarus Convening*) has worked on over 50 productions in a variety of capacities, including producer, director, playwright, lighting designer, properties, set designer, sound, stage manager, technical director, and general lackey — in the professional (Michigan Opera Theatre, Attic Theatre, Marquis Theater, Performance Network, Trumbull Theatre) and community (Stagecrafters of Royal Oak, Jewish Community Center Theater, Avon Theater, University of Michigan Residential College Players, Troy Youth Theater, Ann Arbor Young People's Theatre, St. Dunstan's Theater Guild) theater worlds. This is Rita's first venture with AAP and AACT.

JOHNENE GETTS (Joan, Manager) is an up-and-coming young professional comedian who performs across the Midwest. *New Voices Bijou* marks her debut with AACT and her first play after a six-year hiatus from acting.



Buck Art

VIDEOGRAPHY

One shot event videos up to 2 hrs. - \$60
Extensive experience taping theater and dance

GRAPHIC DESIGN

Event posters

PAINTING and DRAWING

affordable creative work
by Orin Buck

313-994-8781

ANDREA GRIEB (Ruth), a local Ann Arborite, has been involved in theater here for almost three years. Her favorite roles include Pauline in *The Winter's Tale* and Dull in *Love's Labour's Lost*. She also co-directed *The Hobbit* last January. She'd like to thank her friends Joanna Woodcock and Melinda Teter for being both goddesses and inspirations, and Thomas for always calling her Bilbo.



SIMON HA (Director, *Thin Ice*) is a co-recipient of the Best Director - Drama award from the *Ann Arbor News* for his direction of *Yankee Dug You Die* by Philip Kan Gotanda. His production of *I'm Not Rappaport* was voted Best Drama Production in the 1990-1991 season by the AACT membership. Recent directing credits include *The Piano Lesson* (AACT, Feb '95), *Quartet* by Heiner Müller; *Fences*; *Duet for One*; *Frankie and Johnnie in the Claire De Lune*; *Woyzeck*; and Milan Kundera's *Jacques and His Master*. His next production will be *M Butterfly* for AACT in November.



RIC HUNT (Director, *The Perfect Crime, Incident at the Grenzhofel*), teaches acting classes, and has most recently directed *A Soldier's Play* for AACT. A member of the Performance Network's Goodtime Players performance troupe, Ric is also a member of the AACT Board of Directors. His recent acting credits with AACT include *Blood Wedding* and the highly acclaimed production of *Fences*.



MIRIAM L. KIRSCHT (Playwright, *611 Plum Street*) An original member of Ann Arbor Playwrights since 1991, she has written two full-length plays, *Psychic Seeks Mate* and *611 Plum Street*. Involved with the stage first as an actress and then as a writer, Miriam has a master's degree in theatre from EMU, where she began a student playwrighting group.



A volunteer counselor for the Domestic Violence Project, Miriam is interested in the use of drama for exploration of family and social issues. She is also a visual artist.

The Purple Rose Theatre Company *Salutes* Ann Arbor Playwrights *and the* New Voices Bijou

Break a Leg!



Hang the Moon

by Suzanne Burr
continues through May 21

Weekend Comedy

by Jeanne and Sam Bobrick
begins June 8

The Purple Rose Theatre Company

137 Park Street
Chelsea, Michigan
313-475-7902

RANDY KURSTIN (Todd, Tour Guide) is a Junior at the University of Michigan, pursuing a BFA in theater. Randy is happy to be making his Civic debut with such a talented group of people. Randy hails from Bethesda, MD and would like to send thanks to all his friends and family (and of course, thanks for their patience):

Special Thanks to Mike, Alison, Friends at Luther, Ric Hunt, Eric Fredrickson, and the staff of the Brown Jug!



SCOTT MANCHA (Sound) has been attending Eastern Michigan University for the past four years, pursuing his degree in theater arts. He has been involved in several productions, both on stage and behind the scenes. AACT audiences first experienced Scott's sound design skills in *The Miracle Worker*. He has an avid interest in stage combat and is a member of Ann Arbor's Ring of Steel stage combat group.

CAROLYN MANNEY (Sarah) is a sophomore at Pioneer High School. Her hobbies include photography, acting, speech, and guitar. This is her first performance and she hopes to do many more!



MERVIL MILLER (Director, *Lemonade or Dinner*) has over 50 years of experience with local theater. He is a former drama teacher with Ann Arbor Public Schools.

SIGRID NAMES (Director, *Scrapboxes*) has filled a variety of shoes in theater, from actress to playwright. At EMU, Sigrid appeared in *Talking With*, *Antigone*, *The Death of Zukashif*, and *Charley's Aunt*, and did backstage work for *The Cherry Orchard* and *Fifth of July*. Her one-act play, *Reflections*, was produced at the EMU Lab Theater.

JOSY NORTON (Cindy, Student) lives in Ann Arbor and acts with Junior Theater. She is a soccer enthusiast.

JUDITH PEEBLES (Client, Yew) has played the role of Bub in AACT's *Babylonian Encounter* for the past eight years and, most recently, Aunt Ev in *The Miracle Worker*. She is a visual artist working in welded steel.



JULI PINSAK (Poster Fabrication) has a degree in language, a degree in science, and a degree in the fine arts —

new script development series



Ann Arbor Playwrights



Ann Arbor Playwrights
and
Ann Arbor Civic Theatre
present

NEW VOICES BIJOU

a festival of 10 new plays by local playwrights

Carol Duffy Sheldon • Jim Floyd • Madeline Strong Diehl • Suzanne Burr • Rachel Urist
Maria A. Collis • Miriam Kirscht • Andrea Chambers • T.D. Bateman • Brad Field

Directors

Mervil Miller • Ric Hunt • John Dodt • Adam Carey • Simon Ha
Larry Rusinsky • Carol Shepherd • Rita Gerardi • Rob Sulewski

Coordinating Artistic Producers

Brian Falkner • John Dodt • Carol Shepherd

May 11, 12, 13, 18, 19, 20 1995 ~ 8:00 pm
May 13, 20 ~ 2:00 pm

Ann Arbor Civic Theatre
2275 Platt Road, Ann Arbor, Michigan

BILL A

Lemonade or Dinner

by Carol Duffy Sheldon + ★ • directed by Mervil Miller

The Perfect Crime

by Jim Floyd • directed by Ric Hunt

Epiphany at McDonald's

by Madeline Strong Diehl ★ • directed by John Dodt

INTERMISSION

excerpt from Post Partum

by Suzanne Burr + ★ • directed by Adam Carey

Thin Ice

by Rachel Urist + ★ • directed by Simon Ha

BILL B

Living Together: Just Say No

by Maria A. Collis + ★ • directed by Larry Rusinsky

excerpt from 611 Plum Street

by Miriam Kirscht ★ • directed by Carol Shepherd

Scrapboxes

by Andrea Chambers • directed by Sigrid Names

INTERMISSION

Lazarus Convening

by T.D. Bateman ★ • directed by Rita Gerardi & Rob Sulewski

Incident at the Grenzhotel

by Brad Field + • directed by Ric Hunt

+ member of Dramatists Guild

★ member of Ann Arbor Playwrights

ARTISTIC STAFF

Coordinating Artistic Producers	Brian Falkner, John Dodt, Carol Shepherd
Directors	Mervil Miller, Ric Hunt, John Dodt, Adam Carey, Simon Ha, Larry Rusinsky, Carol Shepherd, Rita Gerardi, Rob Sulewski
Set Design	Brian Falkner
Set Construction	Jim Barnes, Manager Tom Coogan, John Dodt, Brian Falkner, Simon Ha, Carol Shepherd, Tom Underwood
Sound Design	Scott Mancha
Lighting Design	"TJ"
Costume Design	Cheryl Berteel
Properties	Tom Coogan
Makeup	Rosemarie Rothe
Poster, Flyer, Program Cover Design	Orin Buck
Poster Fabrication	Juli Pinsak
Program	Palladium Communications

PRODUCTION STAFF

Technical Director	Brian Falkner
Stage Manager	Dana Buck
Assistant Producer	Markus Wischmeyer
Sound, Light Op	Scott Mancha

Many thanks to our Running Crew!

Next year...

HELP US CONTINUE TO
BRING YOU NEW VOICES!

JOIN we're open to new writers, directors and actors
GIVE help us bring local scripts to life on stage!

Name.....
Address.....
City..... State Zip
Phone.....

..... I'm a writer ~ sign me up on the AAP mailing list.

..... I'd like to become an AAP Member (\$10.00) or supporter
(Friend \$25, Producer \$100, Really Big Enchilada \$500)

..... I'm a director / actor interested in workshoping new scripts ~
put me on the AAP mailing list.

..... I have theater experience and will help with the next Festival.

..... I like to be in the audience! Keep me posted on other shows.

PLEASE RETURN THIS TO THE LOBBY OR MAIL TO AAP, BOX 8403, ANN ARBOR MI 48107

palladium communications



*business
marketing
technical
and
legal
communications*

*programs ♦ guides
documentation
newsletters ♦ books
marketing collateral
proposals ♦ grants
reference works
catalogs ♦ mailers
procedures and forms
contracts ♦ RFQs
business plans
ads ♦ articles
product specifications
flyers ♦ brochures
ISBN agency*

313 / 668-4646
313 / 663-9361 fax



ONE-STOP DESKTOP™
WRITING AND DESIGN

Laurel

Home Care Centers

1-800-989-5287

*Specializing in medical
equipment and supplies for the
patient at home*



- Rental
- Sales
- Service & Repair
- Delivery & Set Up
- Free Consultation
- Hundreds of products on display at all three locations

Ann Arbor 1-313-769-7139

Brighton 1-810-229-9196

Ypsilanti 1-313-434-6220

SEVA

RESTAURANT & MARKET

314 E. Liberty • Ann Arbor MI 48104

restaurant (313) 662-1111

market (313) 662-8686

SERVISTAR

Stadium Hardware

2177 W. Stadium Blvd.

Ann Arbor, MI 48103

(313) 663-8704

LEMONADE OR DINNER

by Carol Duffy Sheldon
directed by Mervil Miller

CAST

THE WOMAN	Anne Walker
THE MAN	Joe Diederich
CLERK	Carol Wischmeyer
CLIENTS	Brian Falkner
	Judith Peebles
	Claire Conway

SETTING
A Social Security office



THE PERFECT CRIME

by Jim Floyd
directed by Ric Hunt

CAST

TRACY	Pamela Cardell
TODD	Randy Kurstin
BURTON	Jon Bennett

SETTING
An elegantly appointed country mansion

EPIPHANY AT McDONALD'S

by Madeline Strong Diehl
directed by John Dodt

CAST

AARON	Paul Bianchi
CINDY	Josy Norton
YEW	Judith Peebles
MEE	Hal Wolfe

SETTING

A drive-thru and parking lot



excerpt from

POST PARTUM

by Suzanne Burr
directed by Adam Carey

CAST

JOAN	Johnene Getts
JAMIE	Brian Falkner
LARRY	Andrew Smereck
DELLA	Claire Conway
FATHER	Tom Underwood

SETTING

Community Center dance studio; Joan and Larry's apartment;
a run-down hotel; Joan and Larry's apartment

THIN ICE

by Rachel Urist
directed by Simon Ha

CAST

BINKY Pamela Cardell
LIZ Karen Tsukada

SETTING
A rehearsal room



LIVING TOGETHER: JUST SAY NO

by Maria A. Collis
directed by Larry Rusinsky

CAST

MAVIS Liz Foster
MODEL Hal Wolfe

SETTING
An auditorium

excerpt from 611 PLUM STREET

by Miriam Kirscht
directed by Carol Shepherd

CAST

RUTH Andrea Grieb
CRYSTAL Claire Conway
JOE Jon Bennett
SARAH Carolyn Manney

SETTING

A house in the suburbs



SCRAPBOXES

by Andrea Chambers
directed by Sigrid Names

CAST

DOROTHY Karen Tsukada
KELLY Naomi Adiv

SETTING

An attic

the latter being her favorite. She was the director of a rotating EMU student Watercolor Exhibit for 1-1/2 years and is currently focused on printmaking.

ROSEMARIE ROTHE (Makeup) has been doing makeup for AACT for over 12 years of Main Stage productions. This is only her third time designing makeup for Second Stage: the first two shows were *Seascape* and *Extremities*. As she says, "it's always a challenge to design makeup for Second Stage" because of the small house and the unusual play selection.

LARRY RUSINSKY (Director, *Living Together: Just Say No*) has directed *The Clouds* by Aristophanes and *Seascape* by Edward Albee for AACT, and has also directed Coppard's *The Real Inspector Hound*. His numerous stage credits include *Waiting for Godot*, *Steambath*, *The Lesson*, *The Bald Soprano*, *The Glass Menagerie*, *A Lie of the Mind*, *A Day in the Death of Joe Egg*, *The Death and Life of Sneaky Fitch*, and *The Nerd*. Larry has been awarded Best Actor (*A Day in the Death of Joe Egg*) and Best Supporting Actor (Pozzo in *Waiting for Godot*) by the *Ann Arbor News*.



SEAN P. SANFORD (Dee~Dee) has enjoyed acting at several local venues over the last three years.



The *New Voices Bijou* represents his first association with the talents of AACT.

Two plays by **CAROL DUFFY SHELDON** (Playwright, *Lemonade or Dinner*) have previously been produced by AACT: *The Zoo Keeper*, which was subsequently picked up by community theaters in Kalamazoo and the Wayne-Westland area; and *Sand Castles*, which went on to professional productions in East Coast summer stock.



A runner-up in the Eugene O'Neill Playwrights Conference, Carol has twice won a first-place award for playwriting from the Community Theatre Association of Michigan. Frequently seen on stage at AACT, she is currently working on a new full-length play. She is a member of Ann Arbor Playwrights and the Dramatists Guild. Carol is pleased to inform us that *Lemonade or Dinner* has been named a finalist in this year's Actor's Theatre of Louisville 10-Minute Competition!

CAROL SHEPHERD (Director, 611 Plum Street, Coordinating Artistic Producer, Graphic Design, AAP Liaison) is a member of the Dramatists Guild and AAP. She is the author of two locally produced plays: *Gin*, workshopped at AAP and produced in the 1994 Ann Arbor Festival of Original Plays at the Trueblood Theatre and recognized by Christopher Potter of the *Ann Arbor News* as the best play of the festival; and *Personal Jesus*, which she directed and produced at the Performance Network in 1994. Carol was the director for AAP member Thomas Krawford Jr.'s *Rhyme of a Raven Thyme Dancer*, produced as part of Serpent's Tooth Theatre's New Play Series in 1993. Her local acting credits include *The Lion in Winter*, *House Fire*, *Largo Desolato*, *Celina Child of Mystery* and *On the Verge*.



ANDREW SMERECK (Larry, Theo) has a BA in English and Theater from Michigan State University and a teaching degree from Eastern Michigan University. He has acted in and provided technical support for several Detroit-area community theater productions and at MSU, and is making his AACT stage debut.



ROB SULEWSKI (Assistant Director, *Lazarus Convening*) manages to be involved in multiple Ann Arbor theater projects as he pursues his degree in Comparative Literature at U of M. Rob was co-producer and a featured playwright in the 1994 Ann Arbor Festival of Original Plays.

TJ (Lights) has designed lights in the Civic PlayHouse on Platt Road from the opening show, *Miss Firecracker Contest*, through the most recent show, *One Flew Over the Cuckoo's Nest*, with shows like *A Soldier's Play* and *Cat on a Hot Tin Roof* sandwiched in between. He sometimes doubts he has a life outside the theater.

KAREN Y. TSUKADA (Liz, Dorothy) is a recent transplant from Rochester, NY, after spending two years in a nationally touring children's theater troupe promoting Deaf Awareness. A musical theater actress, she has played Lillian in *Happy End* and Arlene in *Baby*. This is her first appearance with AACT and she is very happy to be here.



about AAP

Ann Arbor Playwrights was formed in November of 1991 by three founding member playwrights, and Serpent's Tooth Theatre Company. AAP moved to its current home at the Performance Network in 1994. The group meets biweekly Sunday afternoons to hear new full-length works, rewrites, "scenes under construction," and topical presentations about writing.

The mission of our group is to facilitate Michigan dramatists by providing a structured workshop environment for the development of new plays, through presentation of scripts-in-progress to the writer's group and interested members of the theater community. Readings are open to the public.

AAP expanded its format beyond full-length pieces in 1994 to accommodate writers who wanted comments on in-progress scenes. Two or three writers present their work on these "Open Scene" days, which are scheduled on an as-needed basis, usually once every 10 weeks.



AAP is a "not-for-profit unincorporated association of writers" — legalese for "just a bunch of people doing the same thing."

Scheduling, moderating, reading roles, and mailings are handled by a rotating pool of volunteers from the group. Playwrights, screenwriters, directors, actors, and interested others are welcome to join and attend.

scripts workshopped

1991

Fred Kinch, *House Fire*
Teddy Ostrow, *Mama Said There'd Be Decades Like This*

1992

Pearl Ahnen, *Stuffed Grapeleaves and Potroast*
Tim Bateman, *A Guest at the Wedding*
Craig Baugh, *Four Friends*
Katie Bohr, *Reconcilin*
Geoffrey Breedon, *Before the Shadow of Morning, The Dreaming Man*
Will Curl, *Get Your Kicks*
Madeline Strong Diehl, *The Grass is Always Greener / On the Other Side of Defense*
Sarah Hauck, *Drag*
Sunil Iyengar, *The Specialist*
Miriam Kirscht, *Psychic Seeks Mate (Madame Gerika)*
Thomas Krawford Jr., *Rhyme of a Raven Thyme Dancer*
Don McGinnis, *Mephistopheles*
Teddy Ostrow, *Roommates from Hell*
Kenn Pierson, *Left Living*
Rachelle Urist, *The Talking Cure*

1993

Pearl Ahnen, *About Sisters*
Tim Bateman, *Lazarus: Convening*
John Biedenbach, *Jackal Laugh*
Katie Bohr, *Death Among Friends*
Bob Bowes, *Doing Time in 3A*
Suzanne Burr, *Tuesday's Child*
Maria Collis, *Strange Bedfellows, Relationships: Why Bother?*
Madeline Strong Diehl, *Belonging*
Sherman Johnson, *The Dummy*
Thomas Krawford Jr., *Morgan Cat Horse, the accused stand ready*
Carol Shepherd, *Gin*
Sean Sullivan, *The Hungry Man's Wheel / Morpheus in Drag*

1994

Tim Bateman, *Loving Company*
Suzanne Burr, *Post Partum*
Maria Collis, *Living Together: The Big Mistake, Audrey*
Madeline Strong Diehl, *Stained Glass*
John Dodt, *Four Rooms in a House*
Brian Falkner, *Personals*
Jeff Herman, *Mentation / Emotion / Morality / Mix, Legal Matters*
Don Howard, *Wallenberg and Eichmann*
Jamey Ketner, *Untitled*
Miriam Kirscht, *611 Plum Street*
Thomas Krawford Jr., *Love and Sadness*
Carol Sheldon, *High Spirits, Lemonade or Dinner*
Carol Shepherd, *Personal Jesus*

AACT 1995 ~ 1996 SEASON

Accomplice

by Rupert Holmes
directed by Conrad Mason
Sep 20-23, 1995

As You Like It

by William Shakespeare
directed by Anne Kolaczowski Magee
Oct 5-21, 1995

M Butterfly

by David Henry Hwang
directed by Simon Ha
Nov 1-4, 1995

Wedding Band

by Alice Childress
directed by J. Ricardo Hunt
Nov 9 - Dec 2, 1995

Blithe Spirit

by Noel Coward
directed by Wendy Wright
Jan 31 - Feb 3, 1996

R.U.R.

by Karel Capek
directed by Dana Buck
Mar 6-9, 1996

Rosencrantz And Guildenstern Are Dead

by Tom Stoppard
directed by Liz Foster
Feb 15 - Mar 2, 1996

The Secret Garden

by Marsha Norman and Lucy Simon
directed by Joy Dennis
Apr 24-27, 1996

The Enchanted

by Jean Giraudoux
directed by Dan Walker
May 9-25, 1996

Noises Off

by Michael Frayn
directed by Thom Johnson
Jun 19 - Jul 6, 1996

Guacamole Infinity

*My Two Years with Nick and Ben . . .
as a Substitute Grandpa*

*A charming book by a
local author, perfect for
a Mother's Day or
Father's Day gift.*

*At Ann Arbor area
bookstores, gift
shops*



Annen Press (313)995-1729

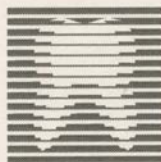
When you see those

great

smiles

up on

stage -



Remember your dentist!

TOM UNDERWOOD (Father, Cop) has appeared in over 13 productions in the Ann Arbor area since 1990, playing everything from senators to circus freaks! Audiences may recognize Tom as the multi-voiced Narrator/Announcer from *An Analysis of a Random Assortment of Eudaemonic Systems* by AAP member Jeffry Herman, which was part of the 1994 Ann Arbor Festival of Original Plays.



RACHEL URIST (Playwright, *Thin Ice*), member of AAP and the Dramatists Guild, is a three-time recipient of the Individual Creative Artist Award from the Michigan Council for the Arts and the winner of the FS Drama Award, the Jacksonville University Playwriting Award, and the John Gassner Memorial Playwriting Competition. Her play, *Shitell Tales*, written for Ann Arbor's Young People's Theatre on a grant from the Michigan Council for the Humanities, was published in the *Playwrights' Companion*. Other plays include: *The Talking Cure*, *Blueprints*, *Off and Running*, *Going Up*, *The Sentimental Father*, *The Whipping Boy*, *Oral Hygiene*, *Consequences*, and *Just Friends*.



ANNE WALKER (The Woman) has performed a variety of roles with AACT as well as other local theater groups including UMGASS, The Stage Presence, Ltd., and Comic Opera Guild. She is delighted to return to AACT after her recent appearance here in *Blood Wedding*. Anne works for the Ann Arbor Young Actors Guild, and promotes and performs with *Music Box*, a mixed vocal jazz quartet, singing classic favorites in swing, be-bop, jazz and pop.



CAROL WISCHMEYER (Clerk) is a social worker in Geriatric Health Services on the campus of St. Joe's Hospital. She appeared in *The Dining Room* and *The Real Inspector Hound*. Her son **MARKUS WISCHMEYER** (Asst Producer) assisted in raising Bijou funds.



HAL WOLFE (Mee, Model, Tourist) is a relative newcomer to AACT. His only previous appearance was last season, as Axel in *The Nerd*. Hal also dabbles in stand-up comedy at open mike nights, runs reeally fast, and is a heinous waster of produce.

Don and Edie Pelz congratulate the

10 Playwrights
9 Directors and
22 Actors of

New Voices Bijou
for a daring venture
that deserves at least
41 broken legs!