



**ANN ARBOR
CIVIC THEATRE**
Presents . . .

**ANN
MISBEHAVIN**

— A MUSICAL REVUE —

Based on an idea by Murray Horowitz and Richard Maltby, Jr.

Featuring Music by Thomas "Fats" Waller

Directed and Choreographed by Linda Spriggs

Musical Direction by Calvin McClinton

October 24-27, 1990 at 8:00 p.m.

Saturday Matinee at 2:00 p.m.

At the Lydia Mendelssohn Theatre

For Ticket information, call 662-7282



With the Support of the
Michigan Council for the Arts



Sponsored in part by:

ANN ARBOR REGION

NBD Bank N.A.

SUBSIDIARY OF NBD BANCORP, INC./MEMBER FDIC





***Convenient Offices
in the Ann Arbor area
to Serve you.***

FOR GENERAL INFORMATION CALL

995-8111

BRIARWOOD OFFICE 105 Briarwood Circle	995-8100
BRIGHTON LOAN PRODUCTION OFFICE 10049 East Grand River in Brighton	229-0381
BROADWAY OFFICE 1156 Broadway	ATM and night deposit only
CAMPUS OFFICE 500 East William at Thompson	995-8080
HURON RIVER DRIVE OFFICE 5485 East Huron River Drive at Clark Road in Ypsilanti	995-8094
MAIN STREET OFFICE 125 South Main Street	995-8111
MICHIGAN UNION LOAN PRODUCTION OFFICE 530 South State Street	995-8037
MILAN OFFICE 9 Wabash Street in Milan	995-8070
MILAN DRIVE-UP OFFICE 541 West Main Street in Milan (24 hr. banking not available)	995-8075
PACKARD-STADIUM OFFICE 1501 East Stadium at Packard	995-8020
PITTSFIELD OFFICE 3500 Washtenaw Avenue at Pittsfield Boulevard	995-8040
PLYMOUTH ROAD OFFICE 3500 Plymouth Road at Green Road	995-8090
WESTGATE OFFICE 2475 West Stadium Blvd. at Westgate Shopping Center	995-8030



24-hour banker



ANN ARBOR
CIVIC THEATRE PRESENTS

AIN'T MISBEHAVIN'

The New "FATS" WALLER Musical Show

Based on an idea by Murray Horowitz and Richard Maltby, Jr.

Vocal Arrangements by
Jeffrey Gutcheon &
William Elliott

Orchestrations &
arrangements by
Luther Henderson

Vocal & Musical
Concepts by
Jeffrey Gutcheon

Originally choreographed by ARTHUR FARIA

Conceived and Originally Directed by
RICHARD MALTBY, JR.

Originally Produced by The Manhattan Theatre Club

Originally Produced on Broadway by Emanuel Azenberg,
Dasha Epstein, The Shubert Organization, Jane Gaynor and Ron Dante

AIN'T MISBEHAVIN' is presented through special arrangement with Music Theatre International, 545 Eighth Ave., New York, NY 10018

Directed and choreographed by **Linda Spriggs**
Musical Direction by **Calvin McClinton**
Featured Pianist - **Ron Joseph**

October 24-27, 1990 at 8:00 PM
Saturday Matinee at 2:00 PM
at the **Lydia Mendelssohn Theatre**

The University of Michigan forbids smoking in any part of the Lydia Mendelssohn Theatre.

DIRECTOR'S MESSAGE

.....Greetings Ladies and Gentlemen!!! Welcome to **"The Club"**. We want you to know how very, very pleased we are that you could join us here 'uptown' this evenin'.....

Well now, get ready! Loosen your collar. Let down your hair. We gonna swing & blues, dance & sing...**jam it up**- Fats Waller Style. Do feel free to shim-sham in the aisles, if that's your pleasure. But look out! I heard they just passed a law 'round here against having **too much** fun. 'Cause you know, when folks get to jumpin' one never knows what's likely to happen.....**Do One ! ? ! ? ! ?**



Ann Arbor Civic Theatre, Inc.

Board of Directors'

Carol Denison	President
Ann VanDemark	Vice President, Administration
Anne Kolaczowski Magee	Vice President, Artistic Coordination
Jeff Zupan	Vice President, Production
Anne Walker	Vice President, Marketing
Conrad Mason	Secretary
Cliff Sheldon	Treasurer
Judy Dow Alexander	
Lee Burkhardt	
Simon Ha	
Andrew Lindstrom	
Peter Niedbala	
Kerry Graves Smith	

Honorary Advisory Committee

Robert Alexander
Constance Baron
Robert Bartels
Jack Becker
Louis D. Belcher
Richard C. Benjamin
Richard Black
Ron Brooks
Richard Brunvard
Donald C. Chisholm
Allan Clague
Russell Collins
Albert Coudron
Mildred Danielson
Robert Darvas
Elizabeth Dexter
Peter Eckstein
Judge and Mrs. S. J. Elden

Virginia Eveland
Don Faber
Sally Fleming
Kathleen M. Fojtick
Dan Fustfeld
Patricia Garcia
Wagar Glas
Ciaribel Baird Halford
Mary and John Hathaway
Fred Hindley
Robert C. Hughes
James Hunt
Zeke Jabbour
Mayor Gerald D. Jernigan
Dr. Eva Jessye
Henry Johnson
Wilfred Kaplan
Robertia Kenston

Henry S. Landau
Guy Larcom
Jerold Lax
John McCollum
Charlotte McGeoch
Virginia Patton Moss
Samuel Mullice
Karen O'Neal
Annska Oversoth
William and Mary Palmer
Prof. Willis Patterson
Edward C. Perce
Beverley and Pat Pooley
Eugene B. Power
Michael Radock
Deanna Relyea
Diane Renken
Duck and Norma Sains

Pamela Seever
David Shipman
Raymond J. Smit
Neil Staebler
Dr. Edward Stasheff
Ken Stevens
Elizabeth Stranahan
Carol Tice
Christine Trautwein
Alice Vining
William Vorus
Katharine Wallace
Zelma Weisfeld
Robert White
Timothy O. White
John Woodford
Phyllis Wright

SEASON STAFF

Artistic Coordination Vice-President
Bookkeeper
Costume Superintendent
Costume Rentals
Front of House/Ushers
Mailing Supervisor
Office Manager
Production Coordinator, MainStreet

Anne Kolaczowski Magee
Lois Vogt
Lee Burkhardt
Barbara Wells
Barbara Daniel
Howard Fox
Robin Konkle Mays
Dana Buck
Thom Johnson
Linda Getty
Wendy Wright
Jeff Zupan
Susan Bellinson
Wayne Burkhardt
Carolyn Norton
Jim Mattson
Jocan Muskovitz

Production Vice President
Props Chair
Publicity and Marketing
Scene Shop Chair
Social Chair
Ticket Agent
Volunteer Committee Chair

You applaud great performance



...so do we.

At Michigan National Bank, our commitment is to deliver the best possible service to our customers. That commitment shows every day in everything we do. We pride ourselves on identifying customer needs and offering products that meet those needs. But our effort doesn't stop there!

At Michigan National we're doing what it takes to deliver that extra effort because we know great service is part of what great banking is all about.



We're doing what it takes.®

201 South Main
at Washington
Ann Arbor
747-7600

2180 West Stadium
at Liberty
Ann Arbor
747-7603

395 Briarwood Circle
at Eisenhower Parkway
Ann Arbor
747-7604

3080 Washtenaw
at Colfax
Ypsilanti
747-7606



ANN ARBOR CIVIC THEATRE
MAINSTREET PRODUCTIONS PRESENTS...

THE RIMERS OF ELDRITCH

by Lanford Wilson
Directed by Anne
Kolaczowski Magee

Thursdays through Saturdays,
November 1-17, 1990—8 p.m.

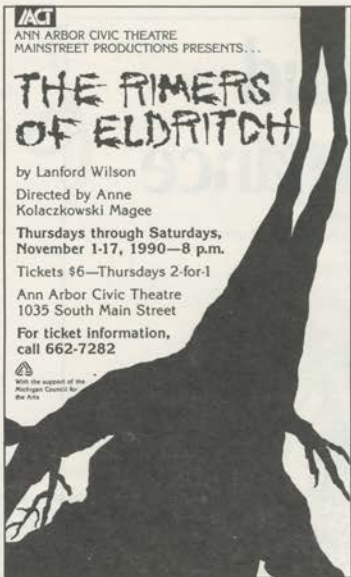
Tickets \$6—Thursdays 2-for-1

Ann Arbor Civic Theatre
1035 South Main Street

For ticket information,
call 662-7282



With the support of the
Michigan Council for
the Arts



Grease

A 50's Rock 'N Roll Musical

3 SHOWS ONLY!

at the Michigan Theater
603 E. Liberty

November 30 & December 1
Curtain Time 8:00 p.m.
Saturday Matinee 2:00 p.m.

Tickets Available at
THE MICHIGAN THEATER
668-8480

A benefit for the People to People Connection
(a non-profit educational and musical organization)

Central Campus's Complete Grocer

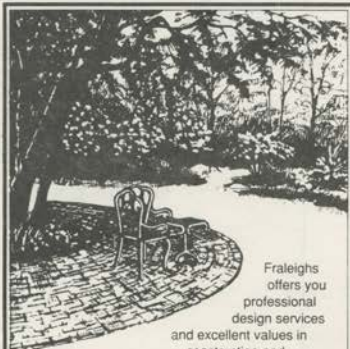
Open 8 a.m.-
1 a.m. 7 days

South University
at Forest

995-1818



**Specialty Foods
& Fine Wines
& Spirits**



Fraleighs
offers you
professional
design services
and excellent values in
construction and
plantings. Our experienced
nurserymen can help you
choose from a wide
selection of beautiful
trees, shrubs, evergreens
and special ornamentals.

*Outdoor
Elegance*

FRALEIGH'S
LANDSCAPE NURSERY

2351 E. Delhi Rd., Ann Arbor
Phone (313) 663-0313



BORDERS BOOK SHOP



over
90,000
titles

303 South State Street
Ann Arbor, Michigan 48104
313/668-7652
Mon - Sat 9-9 Sun 11-6

The Bank
That Specializes
In You.SM

Member FDIC

Society
BANK

Tell Us Where It Hurts.

- My life savings are in CDs that are about to mature, but I'm not too happy about renewing them at such low rates.
- I'm worried the market will drop and take my stocks and mutual funds down with it.
- I'm about to receive a large pension plan distribution, and I'm not sure how I should invest it.

We'll listen to your financial "symptom," and recommend appropriate treatment. So call us today--and just tell us where it hurts!



761-3155

HORIZONS PLANNING CORPORATION
REGISTERED INVESTMENT ADVISOR

Jim Reisinger, Scott Ward

315 E. Eisenhower Pkwy., Suite 212
Ann Arbor, MI 48108

ABOUT THE CAST

DAVID C. BLOOM - A card-carrying member of the Measure for Measure men's choral society, David has been singing and dancing for fifteen years in such roles as "A Bear" in the Cincinnati Symphony orchestra production of Scott Joplin's TREE-MONISHA, and "General Ajax" in the Oberlin Student Theatre production of THE GOLDEN APPLE. David worked behind the scenes last season - his first with AACT - designing and executing the lighting for I'M NOT RAPPAPORT, LYSISTRATA and BRIGADOON. David makes his AACT MainStage debut in AIN'T MISBEHAVIN'.

VIKKI FOX has had a large variety of roles in her ten years with the Dexter Community Players and has done WONDERFUL TOWN with AACT. She also has experience with costuming, makeup and set construction as well as producing. She is currently involved with the big doings for DCP's tenth anniversary, starting with a musical revue of all their musicals in February and ending with OKLAHOMA next July.

ROD GAILES, producer and director of this year's THE PEOPLE COULD FLY and producer and assistant director of 1988's smash musical BLACK NATIVITY, makes his return to performance after a three year absence. We welcome his return and his AACT MainStage debut in AIN'T MISBEHAVIN'.

J. RICARDO HUNT first appeared on AACT's stage last season as Sgt. Kelly in THE MUSICAL COMEDY MURDERS OF 1940. He has played Mr. Bumble in OLIVER!, Snoopy in YOUR'E A GOOD MAN CHARLIE BROWN, and The Jester in ONCE UPON A MATTRESS at Ypsilanti High School. Ric graduated from the University of Maryland in 1980, and is currently a Programmer/Analyst at Spring Arbor Distributors.

RON JOSEPH has been musical director and/or pianist for over 25 musicals, including a recent production of AIN'T MISBEHAVIN' presented at the Count Basie Theater, Red Bank, New Jersey. He is presently director of music at the United Fellowship Baptist Church, Asbury Park, NJ, where he is very active with the seven choirs he directs. Ron has recently released his fifth album of original music, with lyrics by Richard Loyd. Ron notes "I am so happy to be performing this show again. It's so much fun to play and just a great opportunity to work with a super-talented group of singers and actors."

TIRZAMARIE MORALES makes her AACT MainStage debut in AIN'T MISBEHAVIN'. In New York she appeared in her high school production of BYE BYE, BIRDIE (Ursula Merkle) and was on the production crew for DAMN YANKEES. She also enjoys dancing, singing, watching TV, listening to the radio and sports.

CELEBRATE THE DIFFERENCE

In a world of look-alike financial institutions, there's a place that's different from all the rest...
a Credit Union.

U of M Credit Union is a cooperative—every member is an owner and has a vote in how it's run.
That's a difference worth celebrating!

We welcome U of M faculty, staff & alumni.



333 E. William
662-8200





ROBIN A. MURPHY also makes her AACT MainStage debut in this production. She recently completed requirements for a BFA in Musical Theatre at the University of Michigan where she appeared in A CHORUS LINE (Cassie), ON THE TOWN, A WONDERFUL LIFE, LONG TIME SINCE YESTERDAY and HOME.

BRENDA PERRY enjoys being on both sides of the curtains with hobbies including set and sound design, makeup, art and photography. In addition to AIN'T MISBEHAVIN', her first show with AACT, she has appeared in THE BROKEN CALABASH, WHEN THE JUMBIE BIRD CALLS, THE AMEN CORNER at the Bonstelle Stage and THE TEMPEST, LOST IN THE STARS and PURLIE VICTORIOUS at the Wayne State Studio.

ANNETTE MARIE PRATT has moved from helping build the set for AACT's THE MOUSETRAP to appearing on it in her AACT debut performance. For the U of M Gilbert and Sullivan Society she has appeared in THE GONDOLIERS, UTOPIA, LTD., and SENTIMENTAL PASSION. She enjoys songwriting and collecting comic books. Her "Auntie" Kim extends a special welcome to Annette in her first AACT performance (Go get 'em, kid!).

ALBERTA JEAN REED danced with the Toledo Ballet School for ten years, played violin in the Toledo Youth Orchestra for three years and was a member of Junior Monday Musicale in Toledo. At the U of M she sang in the U of M University Choir and was second runner-up in the Miss Black University of Michigan Pageant-1990. She also participated in the U of M Opera Workshop 1989-90. Her hobbies include shopping, travel, and dining at gourmet restaurants. She appeared in GUYS AND DOLLS. AIN'T MISBEHAVIN' marks her first appearance on AACT's MainStage.

MICHELLE HOWARD TOOMER is an account executive for WSDS radio. She has studied theater and communication at Carnegie-Mellon University, Temple University and Bucknell University. Previously she taught drama, dance, radio and TV at Roberto Clemente High School. Her stage credits include ARMS TOO SHORT TO BOX WITH GOD, A RAISIN IN THE SUN, PURLIE, THE WIZ, FOR COLORED GIRLS...., A STAR IS BORN, BLACK NATIVITY and ON MY CHRISTIAN JOURNEY. Currently she is working on an LP.

PHILLIP D. WOODS has served for almost 21 years as pianist/musical director for many gospel and jazz as well as classical groups. We welcome him in his "first real singing-acting-dancing involvement in a production." In his non-musical hours, Phillip is a periodontist, a full-time graduate student in the U of M School of Public Health and also teaches part-time at the U of M School of Dentistry. Somehow he also finds time for sketching/painting, travel and collecting recordings.

Thanks, AACT, for 60 Years of Grand Entertainment!

- Yamaha pianos, Clavinovas, Disklaviers
- Extensive sheet music department
- Rental-purchase plan
- Full service department

115 East Liberty
663-3381



Serving our friends in the area since 1961



MUSICAL NUMBERS

ACT ONE

All music by Thomas "Fats" Waller alone, except where (*) indicated.

Songs not written by Fats Waller were recorded by him.

- "Ain't Misbehavin'" * (1929).....Company
Music by Thomas Waller and Harry Brooks
Lyric by Andy Razaf
- "Lookin' Good But Feelin' Bad" (1929).....Company
Lyric by Lester A. Sanftly
- "I Ain't Nobody's Biz-ness If I Do" * (1922).....Ric with
Brenda, Tirza, Annette, David
Music and Lyric by Porter Grainger and Everett Robbins
- "Honeysuckle Rose" (1929).....Michelle & Phillip
Lyric by Andy Razaf
- "Squeeze Me" (1925).....Tirza
Lyric by Clarence Williams
- "Handful of Keys" (1933).....Robin, Michelle,
Phillip, Rod, Annette
Lyric by Richard Maltby Jr. and Murray Horwitz
(based on an idea by Marty Grosz)
- "I've Got a Feeling I'm Falling" * (1929).....Brenda
with Vikki, Annette, Ric, David
Music by Thomas Waller and Harry Link
Lyric by Billy Rose
- "How Ya Baby" (1938).....David & Company
Lyric by J. C. Johnson
- "The Jitterbug Waltz" (1942).....Robin & Rod with Company
Lyric by Richard Maltby, Jr.
- "The Ladies Who Sing With The Band" (1943).....Phillip &
David
Lyric by George Marlon, Jr.
"Yacht Club Swing" * (1938).....Robin
Music by Thomas Waller and Herman Autry
Lyric by J. C. Johnson
"When the Nylons Bloom Again" (1943).....Brenda with
Tirza, Vikki
Lyric by George Marlon, Jr.
"Cash For Your Trash" (1942).....Annette
Lyric by Ed Kirkeby
"Off-Time" * (1929).....Jean, Rod, Tirza, Vikki, David
Music by Thomas Waller and Harry Brooks
Lyric by Andy Razaf
- "The Joint Is Jumpin'" (1938).....Company
Lyric by Andy Razaf and J. C. Johnson

ACT TWO

- ENTR'ACTE.....The Band
- "Spreadin' Rhythm Around" * (1935).....Jean, Rod
Vikki, Annette, David
Music by Jimmy McHugh
Lyric by Ted Koehler
 - "Lounging at the Waldorf" (1936).....Company
Lyric by Richard Maltby, Jr.
 - "The Viper's Drag" (1943).....Phillip with Company
"The Reefer Song" * (traditional)
 - "Mean To Me" * (1929).....Jean
Music and Lyric by Roy Turk and Fred E. Ahlert
 - "Your Feet's Too Big" * (1943).....Ric
Music and Lyric by Ada Benson and Fred Fisher
 - "That Ain't Right" * (1943).....Michelle & Ric
Music and Lyric by Nat "King" Cole
 - "Keepin' Out of Mischief Now" (1932).....Michelle
Lyric by Andy Razaf
 - "Find Out What They Like" (1929).....Jean & Vikki
Lyric by Andy Razaf
 - "Fat And Greasy" * (1939).....Rod & David
Music and Lyric by Porter Grainger and Charlie Johnson
 - "Black And Blue" * (1929).....Robin, Jean, Michelle,
Phillip, Rod
Music by Thomas Waller and Harry Brooks
Lyric by Andy Razaf
 - Final: songs by others which Fats Waller made hits
"I'm Gonna Sit Right Down And Write Myself a Letter" *
(1933).....Company
Music by Fred E. Ahlert
Lyric by Joe Young
"Two Sleepy People" * (1938).....Vikki & David
Music by Hoagy Carmichael
Lyric by Frank Loesser
"I've Got My Fingers Crossed" * (1935).....Tirza with
Brenda, Rod, Annette, Ric
Music by Jimmy McHugh
Lyric by Ted Koehler
"I Can't Give You Anything But Love" * (1928).....Rod
Music by Jimmy McHugh
Lyric by Dorothy Fields
"It's a Sin to Tell a Lie" * (1933).....Robin & Phillip with
Company
Music and Lyric by Billy Mayhew
"Honeysuckle Rose": (reprise).....Company

INTERMISSION



THE CAST

David C. Bloom
Vikki Fox
Rod Gales
J. Ricardo Hunt
Tirzamarie Morales
Robin A. Murphy
Brenda Perry
Annette Marie Pratt
Alberta Jean Reed
Michelle Howard Toomer
Phillip D. Woods
Ron Joseph - Pianist



THE BAND

Julian B. VanSlyke, Jr.	Percussion
Otis Lockhart	Trombone
James Gullin	Bass



THE STAFF

Director and Choreographer	Linda Spriggs
Musical Director	Calvin Andre McClinton
Assistant Director	Charles Jackson
Producer	Sheryl Dey
Assistant to Musical Director	Phillip D. Wood
Co-Set Designer	Tod More
Co-Set Designer	Theresa Stacy More
Lighting Designer	Barry LaRue
Costume Designer	María Trapani
Sound Designer	David C. Bloom
Set Builder	Pete Halloran
Properties	Shirley Mallette
Hair Designer	Shawn C. Green
Make-Up	Cara Brown
Stage Manager	Rick Ashcroft
Program Editor	Kim Mackenzie



ABOUT THE STAFF

LINDA SPRIGGS (Director and Choreographer), Assistant Professor of Dance at The University of Michigan, received her BFA degree from the Juilliard School, and her MFA from the U of M. She is a former principal dancer with The Atlanta Ballet, The Alvin Ailey American Dance Theatre, The Joyce Trisler Dancecompany, The Kazuko Hirabayashi Dance Theatre. Her teaching experiences include assistant artistic director/company teacher for JUBILATION! Dance Company, modern dance instructor at Alvin Ailey's American Dance Center and at Spelman College. Linda is a founding member of Ann Arbor Dance Works and was choreographer for AACT's DAMN YANKEES.

CALVIN ANDRE MCCLINTON (Musical Director) has been musical director for numerous university and community/regional theater productions of Broadway shows, including MUSIC MAN, SOUND OF MUSIC, I DO, I DO, A CHORUS LINE, LITTLE SHOP OF HORRORS, PURLIE and most recently with the Kalamazoo Civic Black Theatre, EUBIE. Mr. McClinton is currently the Musical Director/Conductor for ANYTHING GOES at the Bonstelle Theatre, Wayne State University, Detroit where he is completing his PhD in Musical Theatre. Later this season, he will appear with the Michigan Opera Theater in SHOWBOAT at the Fisher Theater.

CHARLES JACKSON (Assistant Director) is a member of the performance faculty at the U of M Department of Theatre and Drama, where he coordinates the Black Theatre Studies program. His directing credits include THE MIGHTY GENTS, HOME and OUT AT SEA at the Detroit Repertory Theatre, and most recently, LONG TIME SINCE YESTERDAY at the U of M. As an actor, he has worked professionally in television and film, as well as with regional theatre companies in New York, Pittsburgh, Virginia and Texas.

SHERYL DEY (Producer) is enjoying her second production with AACT. TO KILL A MOCKINGBIRD was her first experience producing a MainStage show. She is a chronic volunteer who isn't happy unless she is organizing something. Her hobbies include sailing, cross-country skiing and working on theatrical productions.

TOD MORE (Co-Set Designer) has been active in many AACT productions, designing lights for MAME, THE MUSIC MAN and BORN YESTERDAY. Away from AACT, Tod was the lighting designer and special effects coordinator for the Dearborn Players' production of TOMMY. He recently did the lights for Comic Opera Guild's BATACLAN and also created all the mysterious passageways for last season's THE MUSICAL COMEDY MURDERS OF 1940 for AACT.

THERESA STACY MORE (Co-Set Designer) has worked with AACT before as costume designer for WONDERFUL TOWN. As a costume designer in St. Paul for over four years, her talents spread throughout the Twin City area. She also costume-designed TOMMY in Dearborn and has done costumes for Ann Arbor Recreation Department's Junior Theater Program.



By popular request,
we will now be serving desserts
from 9:30 - 11 pm weekdays
and until 12 midnight Fri. & Sat.
Come enjoy our award-winning
pastries, espresso, cappuchino,
fine wines and cognacs.

326 WEST LIBERTY 663-3278 RESERVATIONS OPTIONAL

ABOUT THE STAFF

BARRY LARUE (Lighting Designer) is the senior House Technician for University Productions and has lit many shows in Ypsilanti, Ann Arbor and Saline. He is on the Ypsilanti Historic District Commission and resides there with his family in their Victorian-era home. Barry is very pleased to be associated with this production because of his great interest in classical jazz, especially that of "Fats" Waller.

MARIA TRAPANI (Costume Designer) has worked with AACT most recently as costume designer for *AH WILDERNESS!*. She has always been interested in theater costume design. Her hobbies include photography and painting.

DAVID C. BLOOM (Sound Designer) Please see About the Cast.

PETE HALLORAN (Set Builder) has been a free-lance lighting and set designer in ten different states over the last 15 years. He has worked with AACT as Stage Manager for *BRIGADOON* and *THE MOUSETRAP*. His hobbies are hiking, fishing, music and art.

SHIRLEY MALLETT (Properties) has been active in many production areas for AACT, and has also worked on several productions for Comic Opera Guild. When not working for AACT or the U of M, Shirley enjoys bike riding and running.

SHAWN C. GREEN (Hair Designer) is the owner and senior Hair Designer at Finesse Hair Design in Ypsilanti. He is new to AACT, but has produced several fashion shows at the Ann Arbor Sheraton, the Radisson, Hoyt Conference Center and the Airport Hilton.

CARA BROWN (Make-Up) is the make-up artist for Finesse Hair Design in Ypsilanti. She is new to AACT but has worked on several fashion shows produced by Finesse Hair Design.

RICK ASHCROFT (Stage Manager) has made the mistake of being such a talented production member that he rarely gets away with not participating in a Civic production...as if he wanted to! When asked about his hobbies, Rick replied, "Who has time for anything else?" Indeed he does, and other "spare time" interests include sailing and music-psycho acoustics. Rick's history with AACT includes stage-managing six musicals and managing sound/lights for 10 shows for both MainStage and MainStreet productions.

PRODUCTION CREW

Thad English	Set
Eugene Ruiz	Set
Wayne Burkhart	Set
Barbara Wells	Set
Lee Burkhart	Costume
Karen Bojak	Props
Bob Carbeck	Sound
Tracy Boyle	Lights
Anne McClendon	Lights

ACKNOWLEDGEMENTS

King's Keyboard House
Finesse Hair Design
Washtenaw County Sheriff's Department
Blind Pig
Ashley's
Dan's Fan City
Rage of the Age





*Chelsea
Flower
Shop*

203 E. Liberty Street
Ann Arbor, Michigan 48108
Phone: 313/662-5616

GET READY WITH

FINESSE

H A I R D E S I G N

Call for an appointment
482-2170 or 482-2415

Let us treat you to our Fall Specials

with

James, Cynthia, Crissy, Donna, MaCheryl
and Shawn.

128 W. MICHIGAN AVE., YPSILANTI

Dedicated to The Cultural
Enrichment of Our Community
Since 1893

CONGRATULATIONS

TO THE
ANN ARBOR CIVIC THEATRE
ON THEIR
1991 SEASON OF
THEATRICAL TREASURES

NERIM

*Pioneers in Research &
Technology since 1946*



DOBSON-MCOMBER

Insurance & Risk Management

1900 Manchester Road
Ann Arbor, Michigan 48105

DONORS

ANGEL:

Anonymous Donor A

CORPORATE SPONSOR:

Ann Arbor News
Great Lakes Bancorp
Michigan National Bank - Ann Arbor
National Bank of Detroit - Ann Arbor, N.A.

PRODUCER'S CIRCLE:

May Department Stores
Parke-Davis
Society Bank, Michigan
Zeke Jabbour Capital Fund
Robert H. and Judith Dow Alexander
Mary Jarrett
Gwenn and Loft Proegler
Neil and Burnette Staebler
Charlotte VanCurler

DIRECTOR'S CIRCLE:

Prudential-Bache Securities, Inc.
Nick and Sharon Genova
Mr. and Mrs. Cruse W. Moss
Roert and Marina Seeman
Fred and Sarah Steingold
A M Snowplow

STAR:

Action Rental Center
Modern Electric Company
Mr. Jack Becker and Ms. Ellen Prosser
Frederick and Sue Beutler
Chris Hall and Rick Ashcroft
John and Donna Marchello
David and Anne Walker
Timber Scapes

SUPPORTING PLAYER:

Ace Cleaning Co.
Dobson-McOmer Agency
Environmental Research Institute of
Michigan
G. T. Products
John Leidy Shop
Matthew C. Hoffman Jewelry Design

Metal-Tronics, Inc.
Robertson-Morrison, Inc.
Spear & Associates, Inc. Realtors
Stanley Works Foundation
Helene and Robert Abrams
Mr. and Mrs. John Alexander
Mr. and Mrs. Charles M. Allmand

Dr. and Mrs. Robert E. Anderson
M. A. Baranowski
Robin and Betsy Barlow
James M. and Marjorie R. Barnes
Jack and Janice C. Beatty
Peter J. Belanca
Mr. and Mrs. Harry Benford



Gerald and Karen Berger
Jeff Bigelow and Kim Mackenzie
Wilbur and Alyce Carlene Bigelow
L. Ray and Somer Bishop
Drs. Ron and Nancy Bishop
Margaret C. Blood
Dr. and Mrs. David Bohr
Charles and Linda Borgsdorf
Mr. and Mrs. Philip Bowen
Edward and Geraldine Briegel
Leland and Hilda Brown
Mr. and Mrs. Richard Burk
Jean Campbell
Richard and Joyce Chesbrough
Mrs. Clyde H. Coombs
Mrs. Margaret F. Crary
Mr. and Mrs. Jack L. Craven
John and Barbara Dempsey
J. Joseph Diederich
The Dobson Family
M. T. Dodasovich
Dr. and Mrs. Edward F. Domino
Dr. and Mrs. Ivan Duff
The Edwards Family
Judge and Mrs. S. J. Elden
Betie Ellis
Dr. William Ensminger
Judge Peter and Patricia Fink
Charles R. and Mary Jane Fisher
Mr. and Mrs. Ray Fitzgerald
Mr. and Mrs. Robert Fleming
Mr. and Mrs. W. K. Goss

Dr. Robert and Ula Green
The Greene Family
Carl and Julie Goldberg
Mr. and Mrs. Richard A. Hadler
Mr. and Mrs. Harry L. Hallock
Dick Hamparian and Karen Benning
David Harbison
Mr. and Mrs. Robert W. Herbst
Irene Hess
Mr. and Mrs. Russell Hurst
The Jackson Family
K. John Jarrett
Lester F. and Jean Johns
James Johnson
Dr. and Mrs. Paul Kelley
Dale and Bette Kennedy
Janet Krieger
Martha and David Krehbiel
Mrs. J. F. Laird
Carole Lapidus and Jeff Spaulding
Mr. and Mrs. John Leidy
Dr. and Mrs. Paul Lichter
Paul and June Lindquist
Jane Lyons
Gertrude Maglott
Conrad Mason
Mr. and Mrs. David Matthews
Doril Mayerson
Mr. and Mrs. Jack E. Meisenhelder
Aileen Mengel-Schulze
Mrs. William H. Mills Jr.
Mr. and Mrs. William C. Morse

The Muskovitz Family
Mr. Patrick J. O'Meara
Al and Louisa Pieper
Mr. and Mrs. William J. Pierce
William and Lois Porter
Mrs. Elaine I. Rice
Norma Jean and Richard Sams
James and Jo Sauter
Karen Schlanderer
Cliff and Ingild Sheldon
Ned Shure and Jan Onder
Mr. and Mrs. Charles Sing
Alva Sink
Raymond and Donna Smit
Laura L. Smith
W. Dean Smith
Mr. and Mrs. David Staiger
Ed Stein
Mr. and Mrs. Ulrich Stoll
Max and Sue Supica
Charles Sutherland Jr. and James Posante
Richard E. Tashian
Barbara Thompson and Roland Loup
Bradley M. and Bonnie Thompson
Sara VanderVoorst
Mrs. Ann VanRosevelt
Dr. Raoul Weisman
Patricia Werderlitsch
John T. Williams
Roth Woods
Roger and Betty Zauel
Mr. and Mrs. R. G. Zollars

CHORUS:

Garris, Garris, and Garris Law Ofc.
The Equitable Foundation
University Microfilms International
Wilkinson's Luggage Shop
Dr. Lawrence Abramson
Michael and Susan Alexander
Harold F. Allen
Clayton and Edith Anderson
Kathleen Babcock
Dr. and Mrs. Robert E. Barry
Robert C. F. and Virginia F. Bartels
David C. and L. Jean Benoit
P. Nick Blanchard and C. A. Cines
Mrs. Dorothy Blasey
Mr. and Mrs. William Bolcom
Dr. and Mrs. Robert Bonfield
Bruce M. and Mickey Bowman
Lynn Marie and John Hampton Bredell
Morton and Raya Brown
Mr. and Mrs. William M. Brown
Rob Allen and Mary Beth Bruce
Mr. and Mrs. Frederick W. Buckman
Mr. and Mrs. Howard M. Bunch
Mr. and Mrs. Dale E. Burgess
Don Cameron
Mr. and Mrs. Robert M. Campbell
Dr. Ruth Cantlery
Mr. and Mrs. Edwin F. Carlson
Charles W. and Lucille Cassell
Dr. and Dr. Beth K. Clark
Robert and Karen Doss Collins
Mr. Alfred and Georgio Conard
Mr. and Mrs. George H. Connor
Mr. and Mrs. Howard Cooper

Charlotte and Robert Copp
Mr. and Mrs. Albert Coudron
Asha Craine
Mr. and Mrs. C. Merle Crawford
Mr. and Mrs. Max Crosman
Marion Curtis
Morris and Ruth Dalitz
Barbara Daniel
Mr. and Mrs. Lee Danielson
Mr. and Mrs. Richard Deem
Helen L. Dempster
Dean and Doris Douthat
Prof. and Mrs. William G. Dow
Duane F. Dunlap
Mr. and Mrs. Joseph Edwards
Bernard Ehrls
Beulah Eving
Dr. and Mrs. Jerome Epstein
Thomas and Elaine Evans
Adele Ewell
Ted and Sophie Farah
Homer Fatt
Carl R. Fischer
Violet M. Ford
Howard and Margaret Fox
Thomas H. Franks Jr.
Paul and Isabell Fransway
Bartley R. Frueh M.D.
Dr. and Mrs. Carl M. Frye
Mike and Pat Gallagher
Sara and Bruce L. Gibb
Beverly Jeanne Gilrow
Mr. and Mrs. Wagar A. Glas
Kerry Graves Smith and Mike Smith

Whitmore and Svea Gray
Eileen and Thomas H. Green
Mr. and Mrs. Richard Griffin
Peter Gurski
Mr. and Mrs. Elliott S. Guttman
Barbara K. and Patrick E. Hockett
Al Hainen
Claribel Baird Halstead
Harold and Ann Haugh
Mr. and Mrs. Walter Helmeich
Mr. John Holland
Mr. Ray Huettnerman Jr. and Mrs. Jude Huettnerman
Mr. and Mrs. David Hughes
Mr. and Mrs. John C. Hunter
Mr. and Mrs. David Husted
Vern and Norma Hutton
Mr. and Mrs. Kenneth E. Jochim
Anne H. Jones
Roberta Keniston
David F. and Mary Keren
Mary A. Kessel
William and Betsy Kincaid
B. Kingsley and Cheryl A. Buhl
Mr. and Mrs. Leo Klausner
Dr. and Mrs. David J. Knesper
Mrs. Mildred Koen
Jan Koengeler
Dick and Ginny Koester
Christopher Korow
Barbara and James H. Krick
Mr. and Mrs. Leo Kulka
Jenet M. Laughna
Neal Laurance



Diane Laviolette
Richard C. Lewis
Robert Little
Burt K. Lutz
Mr. and Mrs. F. Maaselavaag
Dr. Karl D. Malcolm
Shirley Mallette
Mrs. Pearl Manning
Stewart and Betty Maxwell
Richard and Ann Mary McCarthy
Mr. and Mrs. David McDowell
Leo and Deborah McNamara
Majorie E. McNeil
Catherine and Nelson Meade
Charles and Helen Metzner
Robert and Norma Meyers
Mrs. Dick and Georgia Meyerson
Mrs. Vaden W. Miles
Keith Molin
Katherine Mull
Mrs. Barbara Oddy
Paul and Shirley Olson
Mrs. Charles Owen

Mr. and Mrs. Bruce Paxton
Prof. and Mrs. Robert D. Pehlke
Mr. and Mrs. Harry Pendergrass
Mr. and Mrs. Richard L. Platte
Sam Plice
Margaret Prendergast
Mr. Robert W. Preston
Millard and Mary Pryor
Sharon Rogers Quiroz
Ethel Rathbun
Mr. and Mrs. Albert Richards
David and Joan Robinson
Larry and Deborah Rusinsky
Dr. and Mrs. Allen Saunders
Maya Savarino and Dr. Raymond Tanter
Mr. and Mrs. Thomas Schriber
William and Joy Scofield
Mr. and Mrs. George Sexton
Mr. M. J. Sinnott
Joe E. and Ruth Sinzheimer
Stephen Skelley
Michelle Smith and Victor Adams
Dr. and Mrs. William S. Smith

Majorie Smyth
Bob and Joyce Elliott Squires
Barbara J. and George Stadtmiller
Robert J. Starring
Elizabeth Stranahan
Mr. and Mrs. Charles M. Sutherland Sr.
Mrs. E. Thurston Thieme
Helen S. Thomas
Ned and Mary Jane Thomson
Mr. and Mrs. Louis Trubshaw
Richard Van Harrison
Judy Vasicek
Donald and Antoinette Walker
Patricia Walsh
Gilbert and Ruth Whitaker
Lois Wilson
The Winkler Family
Marion Wick
Mr. and Mrs. Leonard Woodcock
Walter and Betty Woodrow
Mr. and Mrs. A. C. Wool
Susan Zerweck

CAST:



David Haffey, P.C.
Detroit Edison Foundation
Prof. and Mrs. Gardner Ackley
Neil and Shirley Adams
Mr. and Mrs. Tim G. Adams
John Alexander
Yvonne Allen
Gregory and Barbara Alushuski
Forrest Alter
Austin and Catherine Anderson
Rosemary Angel
Ted and Ruth April
Laurie and Smith Atwood
James and Bonnie Back
Dr. and Mrs. Daniel Balbach
Mr. and Mrs. Louis M. Ballus
Mr. and Mrs. Lawrence Barera
Mrs. Jean Lynn Barnard
Joan Barth
Leslie and Anita Basset
Rose Marie Bateman
Mrs. Dorothy Bauer
Richard C. Bauman
Rolph Beebe
Dorothy M. Beecher
Dorothy Bell
Mrs. Rudolph Bergsma
Abraham and Thelma Berman
Mr. and Mrs. Isadore Bernstein
Eugene Berrodin
Elizabeth and Lyman Bittman
Elizabeth Bjork
Lorne C. Black Jr.
Richard and Ann Black
William and Jane Bloom
Dr. and Mrs. D.E. Boblitt
The Boddie Family
Rod Bogart
Jimmy Boles
Pauline Bordner
Morris and Reva Bornstein

Barbara L. Bowen and Winifred Moore
David C. and Carol Bradford
Muriel B. Bradley
Mr. and Dr. C. Arthur Brakel
Mrs. Frank X. Braun
Mr. and Mrs. B. F. Brien
Mr. and Mrs. Allen P. Britton
Mary R. Brooks
Mrs. Deming Brown
Ferne Brown
Leona and George Bunnell
Eunice Burns
Mrs. Russell Burns
Virginia M. Bury
Mrs. Edith Carbeck
Mr. and Mrs. Tom Carbeck
Mrs. Frances Carlson
Mervyn and Marilyn Carse
Mrs. C.A. Carver
Dr. and Mrs. George J. Chats
Mr. A. A. Christman
Irene Cleveland
Dr. and Mrs. Joe Cohen
Mrs. Philip Collica
P. J. Collins
Dr. and Mrs. Jeffrey Colton
Mrs. Betty J. Colvin
Mr. and Mrs. Robert A. Cooch
Goge and Helen Cooper
Mr. and Mrs. Charles Cope
John T. Cottrell
Paul and Katherine Courant
Roger and Harriet Cox
Janet and Ray Crabtree
Mr. and Mrs. H. R. Crane
Marjorie Cripps
Jeffrey D. and E. Christine Crockett
Mr. and Mrs. Walter Crowe
James and Jean Crump
Mr. and Mrs. Richard S. Cuyler
Mr. and Mrs. Philip Deats

Dr. Alan and Rachel Dengiz
Irene Demberger
Manju Deshpande
Raymond Dettler
MacDonald and Carolyn Dick
Mr. Robert G. Dillon
Carol Ann Doll
Virginia H. Donahay
H. Barbara Dorr
Ruth P. and Robin Dorr
Brook and Betty Drenning
Vera Dulworth
Robert B. and Connie Dulap
Elizabeth Duseau
Erica Dutton
Peter Eckstein
Mr. and Mrs. Richard Eidewick
Andrew and Kathryn Eisenberg
Mr. and Mrs. Sol M. Ekin
Mrs. Wilbur Elliott
Sheldon Ellis
Jack and Wylma Etzay
Mackenzie and Marcia Endo
Henry S. and Elsa Z. Evans
Mrs. Warren C. Eveland
Mr. and Mrs. Paul S. Fancher
Mr. and Mrs. Don Farrand
Alan G. Feldt
C. William and H. Jane Ferguson
John E. Fisher
Ruth Floyd
George and Kathryn Foltz
Susan Fowler
David Fox and Paula Bockenstedt
Esther Frank
Claire Fransay
Mrs. Kathryn L. French
Mrs. J. D. Fryman
Nick and Fran Furklot
Mr. and Mrs. Daniel Fustfeld
John and Martha Fyfe

Lois W. Gage
Alan M. Gardner
Gene Gaunt
The Gelehrter Family
Mr. and Mrs. Leslie George
Sandra Geyer
Marilyn Gibson
Mr. and Mrs. James B. Gilligan Jr.
Mr. and Mrs. E. M. Gramlich
Jean and Charles E. Green
Ela M. Grenler
Henry and Barbara Griffin
Atlee L. and Margaret Grillot
Ellie and Ken Grinstead
Thomas C. Grove
Mr. and Mrs. George Hall
Harold H. Harger
Shirley Harkless
Mr. and Mrs. George W. Harms
Mary and John Hathaway
Laura B. Hawke
George and Lillian Hay
Ted Hefley
Dr. and Mrs. James B. Heitler
Mrs. Helen Heitz
Willard J. Hendrickson
Mr. and Mrs. J. Downs Herold
Lynn L. Hobbs
Ms. Ruth Hobbs
Pat Hodges
Mr. and Mrs. Matthew Hogan
Robert and Faye Hoisington
Edward and Dorothy Holden
Mrs. John Holmes
Janet Hoobler
William and Rebecca Horvath
Dr. and Mrs. Frederic House
Iveta Houser
Beth Houston
Mr. and Mrs. Graham Hovey
Mr. and Mrs. Robert Howe
Robert C. Hughes
Mr. and Mrs. Roger Hunter
Waldo and Betty Hunt
Mike Iluzzi
Thom Johnson
Grace Judson
Mr. and Mrs. F. Thomas Juster
Mr. Daniel Katz
William C. and Anna Kelly
Mr. Milton G. Kendrick
Mr. and Mrs. Frank Kennedy
Mr. and Mrs. Ted Kennedy Jr.
Mr. and Mrs. William Kerr
Mrs. Grace F. Kikuchi
Dorothy Sweeney and Edward Kimball
Dan Kitoski
Mr. and Mrs. Donald Klaasen
Evelyn Kramer
Hilda Kurtz
Mrs. Tom Kussurells
Mr. and Mrs. Seymour Lampert
Stephen and Janet Landman
Dr. and Mrs. Jon Larder
Corrine Larsen
Joseph T. A. and Esie Lee
Dianne Leon
Gordon and Vera Levenson
Robert Levy and JoEllin Gutterman
Mary H. Long
Mr. Peter Long
Marjorie Lord
William and Barbara Lowe
Mary Louise Lowther
Mr. and Mrs. William Lunk
William and Judith Lynn
Melba M. Maccabee
Carol H. Magee
Mr. and Mrs. Don Makieiski
Mary Jane Malory and Edna Kate
Dr. Steven and Margaret Manikas
Colleen Martin
Dennis and Mary Anne Martin
Shirley and Gordon R. Martin

Mr. and Mrs. Roger Maugh
Mr. and Mrs. Ernest McCarus
Paul and Ruth McCracken
Griff and Pat McDonald
Mrs. Charlotte McGeoch
Mr. and Mrs. Wilbert J. McKeachie
The McMahon Family
Donald and Elizabeth McNair
Joe and Ruelida Medrano
Richard and Mariam Meister
M. L. Melander
Robert and Ann Meredith
Carol Merrifield
Mr. Kurt Metzger
Fern Meyers
Dr. and Mrs. William Mikkelsen
Mr. and Mrs. Jack M. Miller
Leigh and Dorothy Miller
Mr. and Mrs. Horace Miner
Beth Lou Monticelli
Rosalie Moore
Dr. and Mrs. George Morley
Phyllis E. Mulder
Elizabeth Mustard
Zelma Myers
Ms. Yoshiko Nagamatsu
Kelley Newton
Mr. and Mrs. J. A. Nicholls
Mr. and Mrs. Marvin L. Niehuss
Cecyl and Dolle North
May Oas
Mrs. Finn Olsen
Valtojean Olson
Lillian Ostrand
J. David and Julie Owens
Mr. and Mrs. Howard E. Parker
Dr. and Mrs. Beverly Payne
Judith A. Pence
Joan Perros
Harriet Perry
Millard and Marie A. Phillips
Mr. and Mrs. Robert W. Phillips
Jeffrey and Deborah M. Pickell
Mrs. Winnifred Pierce
Edith Pinter
Mr. and Mrs. Robert Plummer
Robert and Kathy Pollock
Mr. and Mrs. Don Pon
Mr. and Mrs. Rihard Porter
Mrs. Gayatri Prahalaad
Douglas and Roberta Price
Norman and Lynne Pryor
Dr. and Mrs. Francis Purcell
Kathy and Tom Pustell
Janet Rymouse
Maxwell and Marjorie Reade
Mr. and Mrs. Harry Regenstreif
David B. Rein and Allison Bishop-Rein
Ann R. Reindel
Glenda Renwick
Thomas and Kathleen Restrick
Helen M. Rice
Mr. and Mrs. G. Robert Richards
Ms. Linda Ridley
Karwyn Rigon
Judy and Jill Ripple
Jane Robertson
Alma Robison
Ann Rogers
Mr. and Mrs. Stephen Rogers
Jim and Alison Robison
Stephania Rohacz
Richard and Pam Roselle
Mr. T. K. Rossiter
Mr. and Mrs. Frank Rudesil
Mabel Rugen
Mr. and Mrs. Samuel J. Rupert
Robert J. Rups
Mr. and Mrs. James Saalberg
Barbara Sanders
Deborah Sargent
Elizabeth M. Savage
Robert A. and Millie Schalrer
Eleanor and Kenneth Schatzle

Dr. and Mrs. Geoeorge Schaub
Charlene A. Schmitt
Dr. and Mrs. Marvin Schrock
Hazen and Rusty Schumacher Jr.
Lawrence D. Segel
Mary Ann Sellers
Mrs. and Mr. Heather M. Senior
Forrest and Sonia Shaw
Carol Sheldon
Dr. and Mrs. Howard Shevrin
Mr. and Mrs. E.B. Shultz
Jo Ann Shurway
Mrs. Dorothy J. Siano
Donald Cameron and Jean Smith
Karen L. Smith
Mrs. Russell E. Smith
Hinde R. Socol and John Hall
The Spaly Family
Mrs. F. K. Sparrow
Mary Spewcock
Mr. R. E. Spokes
Carl and Mary Stadel
Keith J. Stanger
John David Stark
Dr. and Mrs. Ed Stasheff
Jan Stephens
Thelma Sterling
John D. Stevens
Ken Stevens
Anne S. Stone
Mrs. Ruth Stone
Alfred Storey
Mr. and Mrs. Harry Succop
Jack B. Sullivan
Mr. and Mrs. Richard Tasch
Charles and Peggy Tieman
Julie Tite
Mr. and Mrs. Richard Trim
Mr. and Mrs. Willis Tupper
Nancy Urquiola
Mrs. Govert Van Den Bosch
Ann Vandemark
Mr. and Mrs. John Vezina
Elizabeth Vonvoigtlander
Ms. Electa M. Wagner
James C. and Donna Walker
Gary and Mona Walz
Mrs. Kenneth Wanty
Eric Ward
Margaret Warrick
Mr. and Mrs. Raymond Warzynski
Roger B. Washburn
Darell Washington
Zelma Weisfeld
David and Rosemary Wesenberg
Susan Westerman
Roger Westland
Mr. and Mrs. Douglas M. White
Janet F. White
Randy W. and Diana White
Sharon Kane Wieland
Mr. and Mrs. J. W. Wilkins
Mrs. Brymer Williams
Dr. and Mrs. Francis S. Williams
Paul and Kathryn Winston
Carolyn Wiseman
Israel and Fay Woronoff
Bob and Betty Wurtz
E. Benjamin and Frances Wylie
Phyllis Young
Mr. and Mrs. Kenneth Young
Kenneth and Rosalie Zil
Lucille Zink
George D. and Joan K. Zuidema

Grand Opening

A little pocket of privacy
in the City of Ann Arbor.

Nestled in a private enclave, with wooded areas and rolling land you'll find Huron Chase condominiums. Here, a lifestyle of serenity and tranquility are yours. But all of the excitement of Ann Arbor living is minutes away. The University of Michigan, business centers, shopping, cultural and recreational activities are yours to enjoy within a short drive from your home.

Huron Chase contains ranch, 1½-story and 2-story condominium homes with exteriors blending with the landscape



and interiors that cater to your contemporary lifestyle. Huron Chase brings a new dimension of quality to the Ann Arbor market that has earned The Robertson Group their enviable reputation for over 40 years.

We urge you to visit. Only 50 homes are being built.

Models open noon to five daily
Condominiums priced from \$189,900
Phone: 677-4011

Huron Chase Condominiums are located on Huron Parkway between Washtenaw and Geddes Roads.



HURON CHASE

JENN-AIR

Rb

ROBERTSON BROTHERS GROUP COMMUNITY DEVELOPERS

ACT Ann Arbor Civic Theatre

DISCOVER our 1990-1991 SEASON

with the support of the
Michigan Council for the Arts



Ain't Misbehavin'

Music by Thomas "Fats" Waller

Based on an idea by Murray Horowitz and Richard Maltby, Jr.

Lydia Mendelssohn Theatre, October 24-27, 1990

Fats Waller, the musical soul of 1930s Harlem, continues to bedazzle audiences in this all-embracing musical review. Your toes will tap and your face will smile as Ann Arbor Civic Theatre's talented troupe "struts Fats' stuff" Tony Award winner for Best Musical.

Steel Magnolias

by Robert Harling

Lydia Mendelssohn Theatre, January 23-26, 1991

Truvy's beauty salon, the cutting, trimming and perming place to be for everyone who is someone in Chinquapin, Louisiana, sets the stage for this brilliantly funny and touching slice of southern life. "... Suffused with humor and tinged with tragedy," Clive Barnes, the New York Post.



Watch on the Rhine

by Lillian Hellman

Lydia Mendelssohn Theatre, February 27-March 2, 1991

An anti-fascist German, with his American wife and children, flees Hitler's Germany to find sanctuary in the United States, and a respite from dangerous resistance work. But his conscience cannot be compromised. Winner of a New York Drama Critics Circle Award as Best American Play.

Oliver!

Music, Lyrics, and Book by Lionel Bart

The Power Center for the Performing Arts, May 15-18, 1991

Young rogues, crafty knaves, spunky lads and artful dodgers—Dickens' classic tale of Victorian London, *Oliver Twist*, comes delightfully to life on AACT's stage. Bring the entire family and let OLIVER win your heart with a passel of songs like "Food, Glorious Food!", "Where Is Love?", "You've Got To Pick a Pocket Or Two!", and "As Long As He Needs Me". "OLIVER is an exciting and stunningly beautiful musical play," Richard Watts, Jr., the New York Post.

The Foreigner

by Larry Shue

Lydia Mendelssohn Theatre, June 12-15, 1991

A painfully shy Englishman masquerades as "The Foreigner" at a busy Georgia fishing lodge, where he becomes the inadvertent confidant of all of the guests. "Devilishly clever idea" (Clive Barnes, the New York Post) "I laughed start to finish..." (Edith Oliver, The New Yorker). Winner of two Obie Awards and two Outer Circle Awards, including Best New American Play and Best Off-Broadway Production.

ANN ARBOR CIVIC THEATRE • 1035 S. Main St. • Ann Arbor, MI 48104 • Tel. (313) 662-9405 • Box Office: (313) 662-7282

